

Product datasheet for PH303769

CHI3L1 (NM_001276) Human Mass Spec Standard

Product data:

Product Type:	Mass Spec Standards
Description:	CHI3L1 MS Standard C13 and N15-labeled recombinant protein (NP_001267)
Species:	Human
Expression Host:	HEK293
Expression cDNA Clone or AA Sequence:	RC203769
Predicted MW:	42.6 kDa
Protein Sequence:	>RC203769 protein sequence Red=Cloning site Green=Tags(s) MGVKASQTGFVVLVLLQCCSAYKLVCIYTSWSQYREGDGSCFPDALDRFLCTHIIYSFANISNDHIDTWE WNDVTLYGMLNLTKNRNPNLKTLTSSVGGWNFGSQRFSKIASNTQSRRTFIKSVPPFLRTHGFDGLDLAWL YPGRRDKQHFTTLIKEMKAEFIKEAQPQKQLLLSAALSAGKVTIDSSYDIAKISQHLDFISIMTYDFHG AWRGTGHHSPFRGQEDASPDFSNTDYAVGYMLRLGAPASKLVMGIPTFGRSFTLASSETGVGAPISG PGIPGRFTKEAGTLAYYEICDFLRGATVHRILGQQVPYATKGNQWVGYDDQESVKSKVQYLKDRQLAGAM VWALDLDDFQGSFCGQDLRFPLTNAIKDALAAT TRTRPLEQKLISEEDLAANDILDYKDDDDKV
Tag:	C-Myc/DDK
Purity:	> 80% as determined by SDS-PAGE and Coomassie blue staining
Concentration:	>0.05 µg/µL as determined by microplate BCA method
Labeling Method:	Labeled with [U- ¹³ C ₆ , ¹⁵ N ₄]-L-Arginine and [U- ¹³ C ₆ , ¹⁵ N ₂]-L-Lysine
Buffer:	25 mM Tris-HCl, 100 mM glycine, pH 7.3
Storage:	Store at -80°C. Avoid repeated freeze-thaw cycles.
Stability:	Stable for 3 months from receipt of products under proper storage and handling conditions.
RefSeq:	NP_001267
RefSeq Size:	1867
RefSeq ORF:	1149
Synonyms:	ASRT7; CGP-39; GP-39; GP39; HC-gp39; HCGP-3P; hCGP-39; YK-40; YKL-40; YKL40; YYL-40
Locus ID:	1116



[View online »](#)

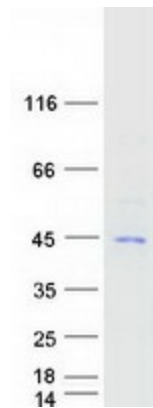
UniProt ID: [P36222](#), [A0A024R969](#)

Cytogenetics: 1q32.1

Summary: Chitinases catalyze the hydrolysis of chitin, which is an abundant glycopolymer found in insect exoskeletons and fungal cell walls. The glycoside hydrolase 18 family of chitinases includes eight human family members. This gene encodes a glycoprotein member of the glycosyl hydrolase 18 family. The protein lacks chitinase activity and is secreted by activated macrophages, chondrocytes, neutrophils and synovial cells. The protein is thought to play a role in the process of inflammation and tissue remodeling. [provided by RefSeq, Sep 2009]

Protein Families: Secreted Protein

Product images:



Coomassie blue staining of purified CHI3L1 protein (Cat# [TP303769]). The protein was produced from HEK293T cells transfected with CHI3L1 cDNA clone (Cat# [RC203769]) using MegaTran 2.0 (Cat# [TT210002]).