

Product datasheet for PH303768

Angiotensinogen (AGT) (NM_000029) Human Mass Spec Standard

Product data:

Product Type:	Mass Spec Standards
Description:	AGT MS Standard C13 and N15-labeled recombinant protein (NP_000020)
Species:	Human
Expression Host:	HEK293
Expression cDNA Clone or AA Sequence:	RC203768
Predicted MW:	53.1 kDa
Protein Sequence:	>RC203768 protein sequence Red=Cloning site Green=Tags(s)
	MRKRAPQSEMAPAGVSLRATILCLLAWAGLAAGDRVYIHPFHLVIHNESTCEQLAKANAGPKDPTFIPA PIQAKTSPVDEKALQDQLVLA AKLDTEDKLRAAMVGMLANFLGFRIYGMHSELWGVVHGATVLSPTAVF GTLASLYLGALDHTADRLQAILGVPWKDKNCTSR LDAHKVLSALQAVQGLLVAQGRADSQAQLLLSTVVG VFTAPGLHLKQPFVQGLALYTPVVLPRSLDFTELDVAAEKIDRFMQAVTGWKTGCSLTGASVDSTLAFNT YVHFQGMKGFSLLAEPQEFWVDNSTSVSPMLSGMGTFQHWSDIQDNFSVTQVSFTESACLLLIQPHYA SDLDKVEGLTFQQNSLNWMKKLSPRTIHLTMPQLVLQGSYDLQDLLAQAEIPAILHTELNLQKLSNDRIR VGEVLNSIFFELEADEREPTTESTQQLNKPEVLEVTLNRPFLFAVYDQSATALHFLGRVANPLSTA
	TRTRPLEQKLI SEEDLAANDILDYKDDDDKV
Tag:	C-Myc/DDK
Purity:	> 80% as determined by SDS-PAGE and Coomassie blue staining
Concentration:	>0.05 µg/µL as determined by microplate BCA method
Labeling Method:	Labeled with [U- 13C6, 15N4]-L-Arginine and [U- 13C6, 15N2]-L-Lysine
Buffer:	25 mM Tris-HCl, 100 mM glycine, pH 7.3
Storage:	Store at -80°C. Avoid repeated freeze-thaw cycles.
Stability:	Stable for 3 months from receipt of products under proper storage and handling conditions.
RefSeq:	<u>NP_000020</u>
RefSeq Size:	2587
RefSeq ORF:	1455
Synonyms:	ANHU; hFLT1; SERPINA8



[View online »](#)

Locus ID: 183

UniProt ID: [P01019](#), [B0ZBE2](#), [B2R5S1](#)

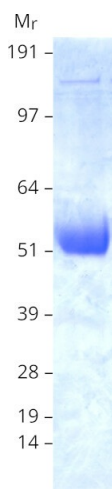
Cytogenetics: 1q42.2

Summary: The protein encoded by this gene, pre-angiotensinogen or angiotensinogen precursor, is expressed in the liver and is cleaved by the enzyme renin in response to lowered blood pressure. The resulting product, angiotensin I, is then cleaved by angiotensin converting enzyme (ACE) to generate the physiologically active enzyme angiotensin II. The protein is involved in maintaining blood pressure, body fluid and electrolyte homeostasis, and in the pathogenesis of essential hypertension and preeclampsia. Mutations in this gene are associated with susceptibility to essential hypertension, and can cause renal tubular dysgenesis, a severe disorder of renal tubular development. Defects in this gene have also been associated with non-familial structural atrial fibrillation, and inflammatory bowel disease. [provided by RefSeq, Nov 2019]

Protein Families: Druggable Genome, Secreted Protein

Protein Pathways: Renin-angiotensin system

Product images:



Coomassie blue staining of purified AGT protein (Cat# [TP303768]). The protein was produced from HEK293T cells transfected with AGT cDNA clone (Cat# [RC203768]) using MegaTran 2.0 (Cat# [TT210002]).