

Product datasheet for PH303767

SERPING1 (NM_000062) Human Mass Spec Standard

Product data:

Product Type:	Mass Spec Standards
Description:	SERPING1 MS Standard C13 and N15-labeled recombinant protein (NP_000053)
Species:	Human
Expression Host:	HEK293
Expression cDNA Clone or AA Sequence:	RC203767
Predicted MW:	55.2 kDa
Protein Sequence:	>RC203767 protein sequence Red=Cloning site Green=Tags(s)

MASRLTLLTLLLLLAGDRASSNPATSSSSQDPESLQDRGEGKVATTVISKMLFVEPILEVSSLPTTNS
TTNSATKITANTTDEPTTQPTTEPTTQPTIQPTQPTTQLPTDSPTQPTTGSFCPGPVTLCSDLSEHSTEA
VLGDALVDFSLKLYHAFSAMKKVETNMAFSPFSIASLLTQVLLGAGENTKTNLESILSYPKDFTCVHQAL
KGFSTTKGVTSVSQIFHSPDLAIRDTFVNASRTL YSSSPRVL SNNSDANLELINTWVAKNTNKKISRLDLS
LPSDTRLVLLNAIYL SAKWKTTFDPKKTRMEPFHFKNQSVIKVPMMSKKYPVAHFIDQTLKAKVGLQLS
HNL SLVILVPQNLKHRLEDMEQALSPSVFKAIMKLEMSKFQPTLLTLPRIKVTTSDMLSIMKLEFFD
FSYDLNLCGLTEDPDLQVSAMQHQTVLELTETGVEAAAAAISVARTLLVFEVQQPFLFMLWDQQHKFPV
FMGRVYDPRA

TRTRPLEQKLI SEEDLAANDILDYKDDDDKV

Tag:	C-Myc/DDK
Purity:	> 80% as determined by SDS-PAGE and Coomassie blue staining
Concentration:	>0.05 µg/µL as determined by microplate BCA method
Labeling Method:	Labeled with [U- 13C6, 15N4]-L-Arginine and [U- 13C6, 15N2]-L-Lysine
Buffer:	25 mM Tris-HCl, 100 mM glycine, pH 7.3
Storage:	Store at -80°C. Avoid repeated freeze-thaw cycles.
Stability:	Stable for 3 months from receipt of products under proper storage and handling conditions.
RefSeq:	<u>NP_000053</u>
RefSeq Size:	1984
RefSeq ORF:	1500



[View online »](#)

Synonyms: C1IN; C1INH; C1NH; HAE1; HAE2

Locus ID: 710

UniProt ID: [P05155](#), [E9KL26](#)

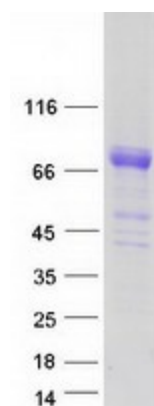
Cytogenetics: 11q12.1

Summary: This gene encodes a highly glycosylated plasma protein involved in the regulation of the complement cascade. Its encoded protein, C1 inhibitor, inhibits activated C1r and C1s of the first complement component and thus regulates complement activation. It is synthesized in the liver, and its deficiency is associated with hereditary angioneurotic oedema (HANE). Alternative splicing results in multiple transcript variants encoding the same isoform. [provided by RefSeq, May 2020]

Protein Families: Druggable Genome, Secreted Protein

Protein Pathways: Complement and coagulation cascades

Product images:



Coomassie blue staining of purified SERPING1 protein (Cat# [TP303767]). The protein was produced from HEK293T cells transfected with SERPING1 cDNA clone (Cat# [RC203767]) using MegaTran 2.0 (Cat# [TT210002]).