

## Product datasheet for PH303762

### RXYLT1 (NM\_014254) Human Mass Spec Standard

#### Product data:

Product Type:	Mass Spec Standards
Description:	TMEM5 MS Standard C13 and N15-labeled recombinant protein (NP_055069)
Species:	Human
Expression Host:	HEK293
Expression cDNA Clone or AA Sequence:	RC203762
Predicted MW:	51.1 kDa
Protein Sequence:	>RC203762 protein sequence Red=Cloning site Green=Tags(s)

MRLTRKRLCSFLIALYCLFSLYAAHVFFGRRRQAPAGSPRGLRKGAAPARERRGREQSTLESEEWNPWE  
GDEKNEQQHRFKTSLQILDKSTKGKTDLSVQIWGKAAIGLYLWEHIFEGLLDPSDVTAQWREGKSI VGR T  
QYSFITGPAVIPGYFSVDVNNVVLILNGREKAKIFYATQWLLYAQNLVQIQKLQHLAVVLLGNEHCDNEW  
INPFLKRNGGFVELLFIIYDSPWINDVDVFQWPLGVATYRNFVVEASWSMLHDERPYLCNFLTGTIYENS  
SRQALMNILKKDGNKLCWVSAREHWQPQETNESLKNYQDALLQSDLTLCVGVNTECYRIYEACSYGSI  
PVVEDVMTAGNCGNTSVHHGAPLQLLKS MGAPF IFIKNWKELPAVLEKEKTIILQEKIERRKMLLQWYQH  
FKTELMKFTNILESSFLMNNKS

TRTRPLEQKLI SEEDLAANDILDYKDDDDKV

Tag:	C-Myc/DDK
Purity:	> 80% as determined by SDS-PAGE and Coomassie blue staining
Concentration:	>0.05 µg/µL as determined by microplate BCA method
Labeling Method:	Labeled with [U- 13C6, 15N4]-L-Arginine and [U- 13C6, 15N2]-L-Lysine
Buffer:	25 mM Tris-HCl, 100 mM glycine, pH 7.3
Storage:	Store at -80°C. Avoid repeated freeze-thaw cycles.
Stability:	Stable for 3 months from receipt of products under proper storage and handling conditions.
RefSeq:	<u>NP_055069</u>
RefSeq Size:	1963
RefSeq ORF:	1329
Synonyms:	HP10481; MDDGA10; TMEM5



[View online »](#)

Locus ID: 10329

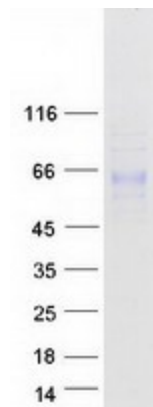
UniProt ID: [Q9Y2B1](#)

Cytogenetics: 12q14.2

**Summary:** This gene encodes a type II transmembrane protein that is thought to have glycosyltransferase function. Mutations in this gene result in cobblestone lissencephaly. Alternative splicing results in multiple transcript variants encoding different isoforms. [provided by RefSeq, May 2013]

**Protein Families:** Transmembrane

### Product images:



Coomassie blue staining of purified RXYLT1 protein (Cat# [TP303762]). The protein was produced from HEK293T cells transfected with RXYLT1 cDNA clone (Cat# [RC203762]) using MegaTran 2.0 (Cat# [TT210002]).