

Product datasheet for PH303756

Alanine Transaminase (GPT) (NM_005309) Human Mass Spec Standard

Product data:

Product Type:	Mass Spec Standards
Description:	GPT MS Standard C13 and N15-labeled recombinant protein (NP_005300)
Species:	Human
Expression Host:	HEK293
Expression cDNA Clone or AA Sequence:	RC203756
Predicted MW:	54.6 kDa
Protein Sequence:	>RC203756 protein sequence Red=Cloning site Green=Tags(s)
	MASSTGDRSQAVRHGLRAKVLTLDGMNPRVRRVEYAVRGPIVQRALELEQELRQGVKKPFTEVIRANIGD AQAMGQRPITFLRQVLALCVNPDLLSSPNFPDDAKKRAERILQACGGHSLGAYSVSSGIQLIREDVARYI ERRDGGIPADPNVFLSTGASDAIVTVLKLLVAGEGHTRTGVLIPIQYPLYSATLAELGAVQVDYYLDE ERAWALDVAELHRALGQARDHCRPRALCVINPGNPTGQVQTRECIEAVIRFAFEERLFLLADEVYQDNVY AAGSQFHFKKVLMEMGPPYAGQQELASFHSTSKGYMGECGFRGGYVEVVNMDAAVQQMLKLMVRLCP PVPGQALLDLVVSPPAPTDP SFAQFQAEKQAVLAELA AAKAKL TEQVFNEAPGISCNPVQGAMYSFPRVQL PPRAVERAQELGLAPDMFFCLRLLEETGICVVP GSGFGQREGTYHFRMTILPPEKLRLLLEKLSRFHAK FTLEYS
	TRTRPLEQKLI SEEDLAANDILDYKDDDDKV
Tag:	C-Myc/DDK
Purity:	> 80% as determined by SDS-PAGE and Coomassie blue staining
Concentration:	>0.05 µg/µL as determined by microplate BCA method
Labeling Method:	Labeled with [U- ¹³ C ₆ , ¹⁵ N ₄]-L-Arginine and [U- ¹³ C ₆ , ¹⁵ N ₂]-L-Lysine
Buffer:	25 mM Tris-HCl, 100 mM glycine, pH 7.3
Storage:	Store at -80°C. Avoid repeated freeze-thaw cycles.
Stability:	Stable for 3 months from receipt of products under proper storage and handling conditions.
RefSeq:	<u>NP_005300</u>
RefSeq Size:	1896
RefSeq ORF:	1488



[View online »](#)

Synonyms: AAT1; ALT1; GPT1

Locus ID: 2875

UniProt ID: [P24298](#)

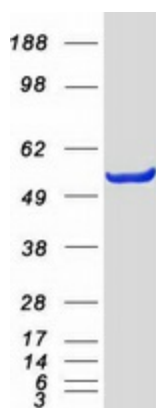
Cytogenetics: 8q24.3

Summary: This gene encodes cytosolic alanine aminotransaminase 1 (ALT1); also known as glutamate-pyruvate transaminase 1. This enzyme catalyzes the reversible transamination between alanine and 2-oxoglutarate to generate pyruvate and glutamate and, therefore, plays a key role in the intermediary metabolism of glucose and amino acids. Serum activity levels of this enzyme are routinely used as a biomarker of liver injury caused by drug toxicity, infection, alcohol, and steatosis. A related gene on chromosome 16 encodes a putative mitochondrial alanine aminotransaminase.[provided by RefSeq, Nov 2009]

Protein Families: Druggable Genome

Protein Pathways: Alanine, aspartate and glutamate metabolism, Metabolic pathways

Product images:



Coomassie blue staining of purified GPT protein (Cat# [TP303756]). The protein was produced from HEK293T cells transfected with GPT cDNA clone (Cat# [RC203756]) using MegaTran 2.0 (Cat# [TT210002]).