

Product datasheet for PH303746

U1SNRNPBP (SNRNP35) (NM_180699) Human Mass Spec Standard

Product data:

Product Type:	Mass Spec Standards
Description:	SNRNP35 MS Standard C13 and N15-labeled recombinant protein (NP_851030)
Species:	Human
Expression Host:	HEK293
Expression cDNA Clone or AA Sequence:	RC203746
Predicted MW:	30 kDa
Protein Sequence:	>RC203746 protein sequence Red=Cloning site Green=Tags(s)
	MKPANMNDWMPIAKEYDPLKAGSIDGTDEDPHRAVWRAMLARYVPNKGVIKDPLLTLFVARLNLQTKED KLKEVFSRYGDIRRLRLVRDLVTGFSKGYAFIEYKEERAVIKAYRDADGLVIDQHEIFVDYELERTLKGW IPRRLGGGLGGKKEGQLRFGGDRPFRKPINLPVVKNDLYREGKRERRERSRSRERHWDSDRTRDRDHRD GREKRWQEREPTRVWPDNDWERERDFRDDRDKGREKKERK
	TRTRPLEQKLISEEDLAANDILDYKDDDDKV
Tag:	C-Myc/DDK
Purity:	> 80% as determined by SDS-PAGE and Coomassie blue staining
Concentration:	>0.05 µg/µL as determined by microplate BCA method
Labeling Method:	Labeled with [U- ¹³ C ₆ , ¹⁵ N ₄]-L-Arginine and [U- ¹³ C ₆ , ¹⁵ N ₂]-L-Lysine
Buffer:	25 mM Tris-HCl, 100 mM glycine, pH 7.3
Storage:	Store at -80°C. Avoid repeated freeze-thaw cycles.
Stability:	Stable for 3 months from receipt of products under proper storage and handling conditions.
RefSeq:	NP_851030
RefSeq Size:	1070
RefSeq ORF:	753
Synonyms:	HM-1; U1SNRNPBP
Locus ID:	11066
UniProt ID:	Q16560

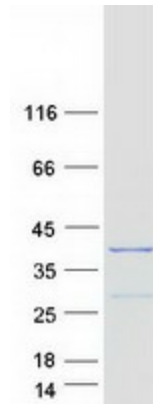


[View online »](#)

Cytogenetics: 12q24.31

Summary: The protein encoded by this gene is a homolog of the U1-snRNP binding protein. The N-terminal half contains a RNA recognition motif and the C-terminal half is rich in Arg/Asp and Arg/Glu dipeptides, which is a characteristic of a variety of splicing factors. This protein is a component of the U11/U12 small nuclear ribonucleoproteins (snRNP) that form part of the U12-type spliceosome. Alternative splicing results in multiple transcript variants encoding two distinct isoforms and representing a non-protein coding variant. [provided by RefSeq, Aug 2013]

Product images:



Coomassie blue staining of purified SNRNP35 protein (Cat# [TP303746]). The protein was produced from HEK293T cells transfected with SNRNP35 cDNA clone (Cat# [RC203746]) using MegaTran 2.0 (Cat# [TT210002]).