

Product datasheet for PH303741

LTA (NM_000595) Human Mass Spec Standard

Product data:

Product Type:	Mass Spec Standards
Description:	LTA MS Standard C13 and N15-labeled recombinant protein (NP_000586)
Species:	Human
Expression Host:	HEK293
Expression cDNA Clone or AA Sequence:	RC203741
Predicted MW:	22.3 kDa
Protein Sequence:	>RC203741 protein sequence Red =Cloning site Green =Tags(s) MTPPERLFLPRVRGTTLHLLLLGLLLVLLPGAQGLPGVGLTPSAAQTARQHPKMHLAHSTLKPA AHLIGD PSKQNSLLWRANTDRAFLQDGFSLSNLLVPTSGIYFVYSQVVFSGKAYSPKATSSPLYLAHEVQLFSS QYPFHVPLLSSQKMVYPGLQEPWLHSMYHGAAFQLTQGDQLSTHTDGIPHLVLSPTVFFGAFAL TR TRPLEQ KL ISEEDLAANDILDYKDDDDKV
Tag:	C-Myc/DDK
Purity:	> 80% as determined by SDS-PAGE and Coomassie blue staining
Concentration:	>0.05 µg/µL as determined by microplate BCA method
Labeling Method:	Labeled with [U- 13C6, 15N4]-L-Arginine and [U- 13C6, 15N2]-L-Lysine
Buffer:	25 mM Tris-HCl, 100 mM glycine, pH 7.3
Storage:	Store at -80°C. Avoid repeated freeze-thaw cycles.
Stability:	Stable for 3 months from receipt of products under proper storage and handling conditions.
RefSeq:	NP_000586
RefSeq Size:	1423
RefSeq ORF:	615
Synonyms:	LT; TNFB; TNFSF1; TNLG1E
Locus ID:	4049
UniProt ID:	P01374 , Q5STV3



[View online »](#)

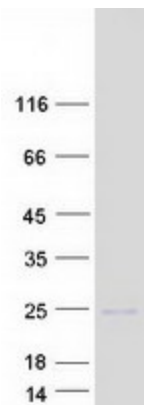
Cytogenetics: 6p21.33

Summary: The encoded protein, a member of the tumor necrosis factor family, is a cytokine produced by lymphocytes. The protein is highly inducible, secreted, and forms heterotrimers with lymphotoxin-beta which anchor lymphotoxin-alpha to the cell surface. This protein also mediates a large variety of inflammatory, immunostimulatory, and antiviral responses, is involved in the formation of secondary lymphoid organs during development and plays a role in apoptosis. Genetic variations in this gene are associated with susceptibility to leprosy type 4, myocardial infarction, non-Hodgkin's lymphoma, and psoriatic arthritis. Alternatively spliced transcript variants have been observed for this gene. [provided by RefSeq, Jul 2012]

Protein Families: Druggable Genome, Secreted Protein, Transmembrane

Protein Pathways: Antigen processing and presentation, Cytokine-cytokine receptor interaction, Type I diabetes mellitus

Product images:



Coomassie blue staining of purified LTA protein (Cat# [TP303741]). The protein was produced from HEK293T cells transfected with LTA cDNA clone (Cat# [RC203741]) using MegaTran 2.0 (Cat# [TT210002]).