

Product datasheet for PH303725

RTDR1 (RSPH14) (NM_014433) Human Mass Spec Standard

Product data:

Product Type:	Mass Spec Standards
Description:	RTDR1 MS Standard C13 and N15-labeled recombinant protein (NP_055248)
Species:	Human
Expression Host:	HEK293
Expression cDNA Clone or AA Sequence:	RC203725
Predicted MW:	38.6 kDa
Protein Sequence:	>RC203725 protein sequence Red=Cloning site Green=Tags(s)

MAHSQNSLELPININATQITTAYGHRALPKLKEELQSEDLQTRQKALMALCDLMHDPECIYKAMNIGCME
NLKALLKDSNSMVRIKTTEVLHITASHVGRYAFLEHDIVLALSFLLNDPSPVCRGNLYKAYMQLVQVPR
GAQEIIISKGLISSLVWKLQVEVEEEEFQEFILDTLVLCQEDATEALGSNVVLVLKQKLLSANQNIIRSKA
ARALLNVSISREGKKQVCHFDVIPILVHLLKDPVEHVKSNAAGALMFATVITEGKYAALEAQAIGLLLEL
LHSPMTIARLNATKALTMLAEAPEGRKALQTHVPTFRAMEVETYEKPQVAEALQRAARIAISVIEFKP

TRTRPLEQKLISEEDLAANDILDYKDDDDKV

Tag:	C-Myc/DDK
Purity:	> 80% as determined by SDS-PAGE and Coomassie blue staining
Concentration:	>0.05 µg/µL as determined by microplate BCA method
Labeling Method:	Labeled with [U- ¹³ C ₆ , ¹⁵ N ₄]-L-Arginine and [U- ¹³ C ₆ , ¹⁵ N ₂]-L-Lysine
Buffer:	25 mM Tris-HCl, 100 mM glycine, pH 7.3
Storage:	Store at -80°C. Avoid repeated freeze-thaw cycles.
Stability:	Stable for 3 months from receipt of products under proper storage and handling conditions.
RefSeq:	<u>NP_055248</u>
RefSeq Size:	1286
RefSeq ORF:	1044
Synonyms:	RTDR1
Locus ID:	27156



[View online »](#)

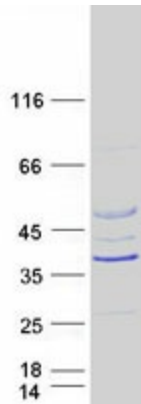
UniProt ID: [Q9UHP6](#)

Cytogenetics: 22q11.22-q11.23

Summary: This gene encodes a protein with no known function but with slight similarity to a yeast vacuolar protein. The gene is located in a region deleted in pediatric rhabdoid tumors of the brain, kidney and soft tissues, but mutations in this gene have not been associated with the disease. [provided by RefSeq, Jul 2008]

Protein Families: Druggable Genome

Product images:



Coomassie blue staining of purified RSPH14 protein (Cat# [TP303725]). The protein was produced from HEK293T cells transfected with RSPH14 cDNA clone (Cat# [RC203725]) using MegaTran 2.0 (Cat# [TT210002]).