

## Product datasheet for PH303724

### CENTB1 (ACAP1) (NM\_014716) Human Mass Spec Standard

#### Product data:

Product Type:	Mass Spec Standards
Description:	ACAP1 MS Standard C13 and N15-labeled recombinant protein (NP_055531)
Species:	Human
Expression Host:	HEK293
Expression cDNA Clone or AA Sequence:	RC203724
Predicted MW:	81.5 kDa
Protein Sequence:	>RC203724 protein sequence Red=Cloning site Green=Tags(s)

MTVKLDFEECLKDSPRFRAASIELVEAEVSELETRLEKLLKLGTLLESGRHYLAASRAVVGICDLARLG  
PPEPMAECLKFTVSLNHLKLDSHAELLDATQHTLQQQIQTLVKEGLRGFREARRDFWRGAESLEAALTH  
NAEVPRRRAQEAEEGAALRTARAGYRGRALDYALQINVIEDKRFKDFIMEFVLRVLEAQATHFQQGHEEL  
SRLSQYRKELGAQLHQLVLSAREKRDMEQRHVLLKQKELGGEEPEPSLREGPGGLVMEGHLFKRASNAF  
KTWSRRWFIIQSNQLVYQKQKDPVTVVDDLRCTVKLCPDSERRFCFEVVSTSKSCLLQADSERLLQL  
WYSAVQSSIASAFSQARLDDSPRPGQGSGHLAIGSAATLGSMMARGREPQGGVGHVVAQVQSVQDGNACQ  
CDCREPAPEWASINLGVTLCIQCSGIHRS LGVHFSKVRSLTLDWEPELVKLMCELGNIINQIYEARVE  
AMAVKKPGPSCSRQEKAWIHAKYVEKFLTKLPEIRRRGRGRPRGQPPVPPKPSIRPRPGLRSKPE  
PPSEDLGSLHPGALLFRASGHPPSLPTMADALAHGADVNVWNGGQDNATPLIQATAANSLACEFLLQNG  
ANVNQADSAGRGPLHHATILGHTGLACLFLKRGADLGARDSEGRDPLTIAMETANADIVTLLRLAKMREA  
EAAQQAGDETYLDIFRDFSLMASDDPEKLSRRSHDLHTL

TRTRPLEQKLISEEDLAANDILDYKDDDDKV

Tag:	C-Myc/DDK
Purity:	> 80% as determined by SDS-PAGE and Coomassie blue staining
Concentration:	>0.05 µg/µL as determined by microplate BCA method
Labeling Method:	Labeled with [U- <sup>13</sup> C <sub>6</sub> , <sup>15</sup> N <sub>4</sub> ]-L-Arginine and [U- <sup>13</sup> C <sub>6</sub> , <sup>15</sup> N <sub>2</sub> ]-L-Lysine
Buffer:	25 mM Tris-HCl, 100 mM glycine, pH 7.3
Storage:	Store at -80°C. Avoid repeated freeze-thaw cycles.
Stability:	Stable for 3 months from receipt of products under proper storage and handling conditions.
RefSeq:	<u><a href="#">NP_055531</a></u>



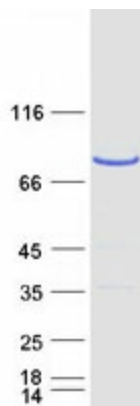
[View online »](#)

RefSeq Size: 2523  
RefSeq ORF: 2220  
Synonyms: CENTB1  
Locus ID: 9744  
UniProt ID: [Q15027](#)  
Cytogenetics: 17p13.1

**Summary:** GTPase-activating protein (GAP) for ADP ribosylation factor 6 (ARF6) required for clathrin-dependent export of proteins from recycling endosomes to trans-Golgi network and cell surface. Required for regulated export of ITGB1 from recycling endosomes to the cell surface and ITGB1-dependent cell migration.[UniProtKB/Swiss-Prot Function]

**Protein Pathways:** Endocytosis

### Product images:



Coomassie blue staining of purified ACAP1 protein (Cat# [TP303724]). The protein was produced from HEK293T cells transfected with ACAP1 cDNA clone (Cat# [RC203724]) using MegaTran 2.0 (Cat# [TT210002]).