

Product datasheet for PH303704

NPEPL1 (NM_024663) Human Mass Spec Standard

Product data:

Product Type:	Mass Spec Standards
Description:	NPEPL1 MS Standard C13 and N15-labeled recombinant protein (NP_078939)
Species:	Human
Expression Host:	HEK293
Expression cDNA Clone or AA Sequence:	RC203704
Predicted MW:	55.9 kDa
Protein Sequence:	>RC203704 protein sequence Red=Cloning site Green=Tags(s)

MANVGLQFQASAGSDPQSRPLLLGQLHHLHRVPWSHVRGKLQPRVTEELWQAALSTLNPNTDSCPLY
LNYATVAALPCRVSRRHNSPSAAHFITRLVRTCLPPGAHRCIVMVCEQPEVFASACALARAFPLFTHRSGA
SRRLEKKTVTVEFFLVGQDNGPVEVSTLQCLANATDGVRLAARIIVDTPCNEMNTDTFLEEINKVGKELGI
IPTIIRDEELKTRGFGGIYGVGKAALHPPALAVLSHTPDGATQTIAWVGKGIYVDTGGLSIKGGTTMPGM
KRDCGAAAVLGAFAAAIKQGFKNLHAVFCLAENSVGNATRPDDIHLLYSGKTVEINNTDAEGRVLVA
DGVSACKDLGADIILDMATLTGAQGIATGKYHAAVLTNSAEWEAACVKAGRKCGDLVHPLVYCPHELHFS
EFTSAVADMKNVADRDNSPSSCAGLFIASHIGFDWPGVWVHLDIAAPVHAGERATGFGVALLLALFGRA
SEDPLLNLVSPLGCEVDVEEGLGRDSKRRRLV

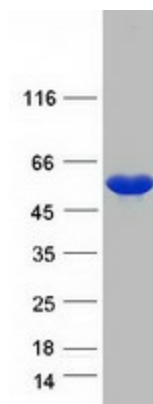
TRTRPLEQKLISEEDLAANDILDYKDDDDKV

Tag:	C-Myc/DDK
Purity:	> 80% as determined by SDS-PAGE and Coomassie blue staining
Concentration:	>0.05 µg/µL as determined by microplate BCA method
Labeling Method:	Labeled with [U- ¹³ C ₆ , ¹⁵ N ₄]-L-Arginine and [U- ¹³ C ₆ , ¹⁵ N ₂]-L-Lysine
Buffer:	25 mM Tris-HCl, 100 mM glycine, pH 7.3
Storage:	Store at -80°C. Avoid repeated freeze-thaw cycles.
Stability:	Stable for 3 months from receipt of products under proper storage and handling conditions.
RefSeq:	NP_078939
RefSeq Size:	2217
RefSeq ORF:	1569



[View online »](#)

Synonyms:	bA261P9.2
Locus ID:	79716
UniProt ID:	Q8NDH3
Cytogenetics:	20q13.32
Summary:	Probably catalyzes the removal of unsubstituted N-terminal amino acids from various peptides.[UniProtKB/Swiss-Prot Function]
Protein Families:	Druggable Genome, Protease

Product images:

Coomassie blue staining of purified NPEPL1 protein (Cat# [TP303704]). The protein was produced from HEK293T cells transfected with NPEPL1 cDNA clone (Cat# [RC203704]) using MegaTran 2.0 (Cat# [TT210002]).