

Product datasheet for PH303703

LMBR1 (NM_022458) Human Mass Spec Standard

Product data:

Product Type:	Mass Spec Standards
Description:	LMBR1 MS Standard C13 and N15-labeled recombinant protein (NP_071903)
Species:	Human
Expression Host:	HEK293
Expression cDNA Clone or AA Sequence:	RC203703
Predicted MW:	55.1 kDa
Protein Sequence:	>RC203703 protein sequence Red=Cloning site Green=Tags(s)

MEGQDEVSAREQHFHSQVRESTICFLLFAILYVVSFYIITRYKRKSDEQEDEDIVNRISLFLSTFTLAV
SAGAVLLLPFSIISNEILL SFPQNYIQWLNGLIHGLWNLASLFSNLCLFVLMPPFAFFLESEGFAGLK
KGIRARILETLVMLLLLALLILGIVWVASALIDNDAASMESLYDLWEFYLPYLYSCISLMGCLLLLLCTP
VGLSRMFTVMGQLLVKPTILEDLDEQIYIITLEEEALQRRNLGLSSSVEYNIMELEQELENVKTLLKTKLE
RRKKASAWERNLVYPVMVLLL IETSISVLLVACNILCLLVDETAMPKGTRGPGIGNASLSTFGFVGAAL
EIIILIFYLMVSSVVG FYSLRFFGNFTPKKDDTTMTKIIGNCVSILVLSALPVM SRTLGITRFDLLGDFG
RFNWLGNFYIVLSYNLLFAIVTTLCLVRKFTSAVREELFKALGLHKLHLPNTRS DSETAKPSVNGHQKAL

TRTRPLEQKLI SEEDLAANDILDYKDDDDKV

Tag:	C-Myc/DDK
Purity:	> 80% as determined by SDS-PAGE and Coomassie blue staining
Concentration:	>0.05 µg/µL as determined by microplate BCA method
Labeling Method:	Labeled with [U- ¹³ C ₆ , ¹⁵ N ₄]-L-Arginine and [U- ¹³ C ₆ , ¹⁵ N ₂]-L-Lysine
Buffer:	25 mM Tris-HCl, 100 mM glycine, pH 7.3
Storage:	Store at -80°C. Avoid repeated freeze-thaw cycles.
Stability:	Stable for 3 months from receipt of products under proper storage and handling conditions.
RefSeq:	<u>NP_071903</u>
RefSeq Size:	4909
RefSeq ORF:	1470
Synonyms:	ACHP; C7orf2; DIF14; LSS; PPD2; THYP; TPT; ZRS



[View online »](#)

Locus ID: 64327

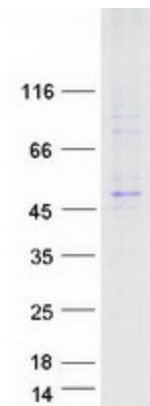
UniProt ID: [Q8WVP7](#)

Cytogenetics: 7q36.3

Summary: This gene encodes a member of the LMBR1-like membrane protein family. Another member of this protein family has been shown to be a lipocalin transmembrane receptor. A highly conserved, cis-acting regulatory module for the sonic hedgehog gene is located within an intron of this gene. Consequently, disruption of this genic region can alter sonic hedgehog expression and affect limb patterning, but it is not known if this gene functions directly in limb development. Mutations and chromosomal deletions and rearrangements in this genic region are associated with acheiropody and preaxial polydactyly, which likely result from altered sonic hedgehog expression. [provided by RefSeq, Jul 2008]

Protein Families: Transmembrane

Product images:



Coomassie blue staining of purified LMBR1 protein (Cat# [TP303703]). The protein was produced from HEK293T cells transfected with LMBR1 cDNA clone (Cat# [RC203703]) using MegaTran 2.0 (Cat# [TT210002]).