

## Product datasheet for PH303697

### LRRC40 (NM\_017768) Human Mass Spec Standard

#### Product data:

Product Type:	Mass Spec Standards
Description:	LRRC40 MS Standard C13 and N15-labeled recombinant protein (NP_060238)
Species:	Human
Expression Host:	HEK293
Expression cDNA Clone or AA Sequence:	RC203697
Predicted MW:	68.2 kDa
Protein Sequence:	>RC203697 protein sequence Red=Cloning site Green=Tags(s)

MSRLKRIAGQDLRAGFKAGGRDCGTSVPQGLLKAARKSGQLNLSGRNLSEVPQCVRINVDIPEEANQNL  
SFGATERWWEQTDLTKLII SNNKLQSLTDDLRLLPALTVLDIHDNQLTSLPSAIRELENLQKLNVSHNKL  
KILPEEITNLRNLKCLYLQHNETCISEGFEQLSNLEDLDL SNNHLTTVPASFSSSLVRLNLSNELK  
SLPAEINRMKRLKHLDCNSNLETTIPPELAGMESLELLYLRRNKL RFLPEFPSCSLLKELHVGENQIEML  
EAEHLKHLNSILVLDLRDNKLSVPDEIILLRSLERLDL SNNDISSLPYSLGNLHLKFLALEGNPLRTIR  
REIISKGTQEVLYLRSKIKDDGPSQSESATETAMTLPSESRVNIHAIITLKILDYSDKQATLIPDEVFD  
AVKSNIVTSINF SKNQLCEIPKRMVELKEMVSDVDLSFNKLSFISLELCVLQKLTFLDLRNNFLNSLPEE  
MESLVRQTINLSFNRFKMLPEVLYRIFTLETILISNNQVGSVDPQKMKMMENLTLDLQNNDLLQIPPE  
LGNCVNLRTLLLDGNPFRVPRAAILMKGTA AILEYLRDRIPT

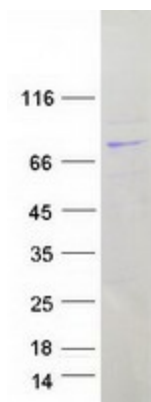
TRTRPLEQKLI SEEDLAANDILDYKDDDDKV

Tag:	C-Myc/DDK
Purity:	> 80% as determined by SDS-PAGE and Coomassie blue staining
Concentration:	>0.05 µg/µL as determined by microplate BCA method
Labeling Method:	Labeled with [U- <sup>13</sup> C <sub>6</sub> , <sup>15</sup> N <sub>4</sub> ]-L-Arginine and [U- <sup>13</sup> C <sub>6</sub> , <sup>15</sup> N <sub>2</sub> ]-L-Lysine
Buffer:	25 mM Tris-HCl, 100 mM glycine, pH 7.3
Storage:	Store at -80°C. Avoid repeated freeze-thaw cycles.
Stability:	Stable for 3 months from receipt of products under proper storage and handling conditions.
RefSeq:	<a href="#">NP_060238</a>
RefSeq Size:	2958
RefSeq ORF:	1806



[View online »](#)

Synonyms: dj677H15.1  
Locus ID: 55631  
UniProt ID: [Q9H9A6](#), [A0A140VJN3](#)  
Cytogenetics: 1p31.1  
Protein Families: Druggable Genome

**Product images:**

Coomassie blue staining of purified LRRC40 protein (Cat# [TP303697]). The protein was produced from HEK293T cells transfected with LRRC40 cDNA clone (Cat# [RC203697]) using MegaTran 2.0 (Cat# [TT210002]).