

## Product datasheet for PH303693

### CENPT (NM\_025082) Human Mass Spec Standard

#### Product data:

Product Type:	Mass Spec Standards
Description:	CENPT MS Standard C13 and N15-labeled recombinant protein (NP_079358)
Species:	Human
Expression Host:	HEK293
Expression cDNA Clone or AA Sequence:	RC203693
Predicted MW:	60.4 kDa
Protein Sequence:	>RC203693 protein sequence <span style="color: red;">Red</span> =Cloning site <span style="color: green;">Green</span> =Tags(s)

MADHNPDSDSTPRTLLRRVLDTADPRTPRRPSARAGARRALLETASPRKLSGQTRTIARGRSHGARSVG  
 RSAHIQASGHLEEQTPTLLKNILLTAPESSILMPESVVKPVPAPQAVQPSRQESSCGSLELQLPELEPP  
 TTLAPGLLAPGRRKQRLRLSVFQQGVDQGLSLSQEPQGNADASSLTRSLNLTATPLQPQSVQRPLARR  
 PPARRAVDVGAFLRDLRDTSLAPPNIVLEDTQPFSPQPMVGSPPNVYHSLPCTPHTGAEDAEQAAGRKTQSS  
 GPGLQKNSPGKPAQFLAGEAEEVNAFALGFLSTSSGVSGEDEVEPLHDGVEEAEKKMEEEGVSVSEMEAT  
 GAQGSPSRVEEAEGHTEVTEAEGSQGTAEADGPGASSGDEDASGRAASPESASSTPESLQARRHHQFLEPA  
 PAPGAAVLSSEPAEPLLRHPPRPRTTGPRPRQDPHKAGLSHYVKLFSFYAKMPMERKALEMVEKCLDKY  
 FQHLCDLLEVFAAHAGRKTVKPEDLELLMRRQGLVTDQVSLHVLVERHLPLEYRQLLIPCAYSGNSVFPA  
 Q

SGPTRTRPLEQKLISEEDLAANDILDYKDDDDKV

Tag:	C-Myc/DDK
Purity:	> 80% as determined by SDS-PAGE and Coomassie blue staining
Concentration:	>0.05 µg/µL as determined by microplate BCA method
Labeling Method:	Labeled with [U- <sup>13</sup> C <sub>6</sub> , <sup>15</sup> N <sub>4</sub> ]-L-Arginine and [U- <sup>13</sup> C <sub>6</sub> , <sup>15</sup> N <sub>2</sub> ]-L-Lysine
Buffer:	25 mM Tris-HCl, 100 mM glycine, pH 7.3
Storage:	Store at -80°C. Avoid repeated freeze-thaw cycles.
Stability:	Stable for 3 months from receipt of products under proper storage and handling conditions.
RefSeq:	<a href="#">NP_079358</a>
RefSeq Size:	2360
RefSeq ORF:	1683


[View online »](#)

**Synonyms:** C16orf56; CENP-T; SSMGA

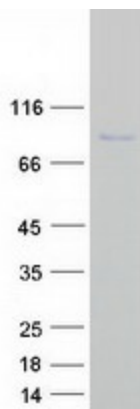
**Locus ID:** 80152

**UniProt ID:** [Q96BT3](#), [B3KPB2](#)

**Cytogenetics:** 16q22.1

**Summary:** The centromere is a specialized chromatin domain, present throughout the cell cycle, that acts as a platform on which the transient assembly of the kinetochore occurs during mitosis. All active centromeres are characterized by the presence of long arrays of nucleosomes in which CENPA (MIM 117139) replaces histone H3 (see MIM 601128). CENPT is an additional factor required for centromere assembly (Foltz et al., 2006 [PubMed 16622419]).[supplied by OMIM, Mar 2008]

## Product images:



Coomassie blue staining of purified CENPT protein (Cat# [TP303693]). The protein was produced from HEK293T cells transfected with CENPT cDNA clone (Cat# [RC203693]) using MegaTran 2.0 (Cat# [TT210002]).