

## Product datasheet for PH303676

### FKBP10 (NM\_021939) Human Mass Spec Standard

#### Product data:

Product Type:	Mass Spec Standards
Description:	FKBP10 MS Standard C13 and N15-labeled recombinant protein (NP_068758)
Species:	Human
Expression Host:	HEK293
Expression cDNA Clone or AA Sequence:	RC203676
Predicted MW:	64.2 kDa
Protein Sequence:	>RC203676 protein sequence Red=Cloning site Green=Tags(s)

MFPAGPPSHSLRLPLLQLLLL VVQAVGRGLGRASPAGGPLEDVVIERYHIPRACPREVQMGDFVRYHYN  
GTFEDGKKFDSSYDRNTLVAIIVGVGRLITGMDRGLMGMCVNERRRILVPPHLGYGSIGLAGLIPPDATL  
YFDVLLLDVWVKEDTVQVSTLLRPPHCPRMVQDGFVRYHYNGTLLDGTSTSYSKGGTYDITYVSGWL  
IKGMDQGLLGMCPEGERRKIIIPPFLAYGEKGYGTVIPPQASLVFHVLLIDVHNPKDAVQLETLELPPGCV  
RRAGAGDFMRYHYNGSLMDGTLFDSSYSRNHTYNTYIGQGYIIPGMDQGLQGACMGERRITIPPHLAYG  
ENGTGDKIPGSAVLI FNVHVIDFHNPADVVEIRTL SRPSETCNETTKLGDVRYHYNCSLLDGTQLFTSH  
DYGAPQEATLGANKVIEGLDTGLQGMCGERRQLIVPPHLAHGESGARGVPGSAVLLFEVELVSREDGLP  
TGYLFVWHKDPANLFEDMDLNKDGEVPPEEFSTFIKAQVSEKGRMLMPGQDPEKTI GDMFQNQDRNQDG  
KITVDELKLSDEDEERVHEEL

TRTRPLEQKLI SEEDLAANDILDYKDDDDKV

Tag:	C-Myc/DDK
Purity:	> 80% as determined by SDS-PAGE and Coomassie blue staining
Concentration:	>0.05 µg/µL as determined by microplate BCA method
Labeling Method:	Labeled with [U- <sup>13</sup> C <sub>6</sub> , <sup>15</sup> N <sub>4</sub> ]-L-Arginine and [U- <sup>13</sup> C <sub>6</sub> , <sup>15</sup> N <sub>2</sub> ]-L-Lysine
Buffer:	25 mM Tris-HCl, 100 mM glycine, pH 7.3
Storage:	Store at -80°C. Avoid repeated freeze-thaw cycles.
Stability:	Stable for 3 months from receipt of products under proper storage and handling conditions.
RefSeq:	<a href="#">NP_068758</a>
RefSeq Size:	2888
RefSeq ORF:	1746



[View online »](#)

**Synonyms:** BRKS1; FKBP65; hFKBP65; OI6; OI11; PPIASE

**Locus ID:** 60681

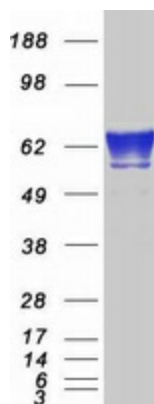
**UniProt ID:** [Q96AY3](#), [A0A024R1W3](#), [Q8NAG5](#), [Q658U4](#)

**Cytogenetics:** 17q21.2

**Summary:** The protein encoded by this gene belongs to the FKBP-type peptidyl-prolyl cis/trans isomerase (PPIase) family. This protein localizes to the endoplasmic reticulum and acts as a molecular chaperone. Alternatively spliced variants encoding different isoforms have been reported, but their biological validity has not been determined.[provided by RefSeq, Nov 2009]

**Protein Families:** Druggable Genome

### Product images:



Coomassie blue staining of purified FKBP10 protein (Cat# [TP303676]). The protein was produced from HEK293T cells transfected with FKBP10 cDNA clone (Cat# [RC203676]) using MegaTran 2.0 (Cat# [TT210002]).