

## Product datasheet for PH303669

### Creatine kinase B type (CKB) (NM\_001823) Human Mass Spec Standard

#### Product data:

Product Type:	Mass Spec Standards
Description:	CKB MS Standard C13 and N15-labeled recombinant protein (NP_001814)
Species:	Human
Expression Host:	HEK293
Expression cDNA Clone or AA Sequence:	RC203669
Predicted MW:	42.6 kDa
Protein Sequence:	>RC203669 protein sequence Red=Cloning site Green=Tags(s)
	MPFSNSHNALKLRFPAEDEFDLSAHNNHMAKVLTPELYAELRAKSTPSGFTLDDVIQTGVDNPGHPYIM TVGCVAGDEESYEVFKDLFDPIIEDRHGGYKPSDEHKTDLNPDNLQGGDDLDPNYVLSRVRTGRSIRGF CLPPHCSRGERRAIEKLAVEALSSLDGDLAGRYALKSMTEAEQQQLIDDHFLFDKPVSPLLLASGMARD WPDARGIWHNDNKTFVLVWNEEDHLRVISMQKGGNMKEVFRFCTGLTQIETLTKSKDYEFMWNPHLGYI LTCPSNLGTGLRAGVHIKLPNLGKHEKFSEVLKRLRLQKRGTGGVDTAAVGGVFDVSNADRLGFSEVELV QMVVDGVKLLIEMEQRLEQGQAIDDLMPAQK
	TRTRPLEQKLISEEDLAANDILDYKDDDDKV
Tag:	C-Myc/DDK
Purity:	> 80% as determined by SDS-PAGE and Coomassie blue staining
Concentration:	>0.05 µg/µL as determined by microplate BCA method
Labeling Method:	Labeled with [U- <sup>13</sup> C <sub>6</sub> , <sup>15</sup> N <sub>4</sub> ]-L-Arginine and [U- <sup>13</sup> C <sub>6</sub> , <sup>15</sup> N <sub>2</sub> ]-L-Lysine
Buffer:	25 mM Tris-HCl, 100 mM glycine, pH 7.3
Storage:	Store at -80°C. Avoid repeated freeze-thaw cycles.
Stability:	Stable for 3 months from receipt of products under proper storage and handling conditions.
RefSeq:	<a href="#">NP_001814</a>
RefSeq Size:	1475
RefSeq ORF:	1143
Synonyms:	B-CK; BCK; CKBB; CPK-B; HEL-211; HEL-S-29
Locus ID:	1152



[View online »](#)

UniProt ID: [P12277](#), [V9HWH2](#)

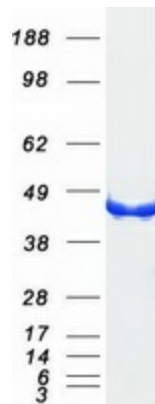
Cytogenetics: 14q32.33

**Summary:** The protein encoded by this gene is a cytoplasmic enzyme involved in energy homeostasis. The encoded protein reversibly catalyzes the transfer of phosphate between ATP and various phosphagens such as creatine phosphate. It acts as a homodimer in brain as well as in other tissues, and as a heterodimer with a similar muscle isozyme in heart. The encoded protein is a member of the ATP:guanido phosphotransferase protein family. A pseudogene of this gene has been characterized. [provided by RefSeq, Jul 2008]

**Protein Families:** Druggable Genome

**Protein Pathways:** Arginine and proline metabolism, Metabolic pathways

### Product images:



Coomassie blue staining of purified CKB protein (Cat# [TP303669]). The protein was produced from HEK293T cells transfected with CKB cDNA clone (Cat# [RC203669]) using MegaTran 2.0 (Cat# [TT210002]).