

## Product datasheet for PH303655

### ACTC1 (NM\_005159) Human Mass Spec Standard

#### Product data:

Product Type:	Mass Spec Standards
Description:	ACTC1 MS Standard C13 and N15-labeled recombinant protein (NP_005150)
Species:	Human
Expression Host:	HEK293
Expression cDNA Clone or AA Sequence:	RC203655
Predicted MW:	42 kDa
Protein Sequence:	>RC203655 protein sequence Red=Cloning site Green=Tags(s)  MCDDEETTALVCDNGSGLVKAGFAGDDAPRAVFPISIVGRPRHQGMVGMGQKDSYVGDEAQS KRGILTLK YPIEHGIITNWDDMEKIWHHTFYNELRVAPEEHPTLLTEAPLNPKANREKMTQIMFETFNVPAMYVAIQ VLSLYASGRRTTGIVLDSGDGVTHNVPIYEGYALPHAIMRLDLAGRDLTDYLMKILTERGYSFVTTAEREI VRDIKEKLCYVALDFENEMATAASSSSLEKSYELPDGQVITIGNERFRCPETLFPQPSFIGMESAGIHETT YNSIMKCDIDIRKDLYANNVLSGGTTMYPGIADRMQKEITALAPSTMKIKIIAPPERKYSVWIGGSILAS LSTFQQMWISKQEYDEAGPSIVHRKCF  TRTRPLEQKLI SEEDLAANDILDYKDDDDKV
Tag:	C-Myc/DDK
Purity:	> 80% as determined by SDS-PAGE and Coomassie blue staining
Concentration:	>0.05 µg/µL as determined by microplate BCA method
Labeling Method:	Labeled with [U- <sup>13</sup> C <sub>6</sub> , <sup>15</sup> N <sub>4</sub> ]-L-Arginine and [U- <sup>13</sup> C <sub>6</sub> , <sup>15</sup> N <sub>2</sub> ]-L-Lysine
Buffer:	25 mM Tris-HCl, 100 mM glycine, pH 7.3
Storage:	Store at -80°C. Avoid repeated freeze-thaw cycles.
Stability:	Stable for 3 months from receipt of products under proper storage and handling conditions.
RefSeq:	<u>NP_005150</u>
RefSeq Size:	3693
RefSeq ORF:	1131
Synonyms:	ACTC; ASD5; CMD1R; CMH11; LVNC4
Locus ID:	70



[View online »](#)

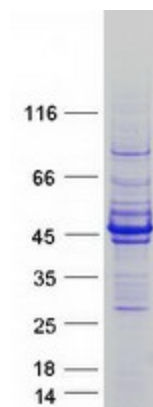
UniProt ID: [P68032](#), [B3KPP5](#)

Cytogenetics: 15q14

**Summary:** Actins are highly conserved proteins that are involved in various types of cell motility. Polymerization of globular actin (G-actin) leads to a structural filament (F-actin) in the form of a two-stranded helix. Each actin can bind to four others. The protein encoded by this gene belongs to the actin family which is comprised of three main groups of actin isoforms, alpha, beta, and gamma. The alpha actins are found in muscle tissues and are a major constituent of the contractile apparatus. Defects in this gene have been associated with idiopathic dilated cardiomyopathy (IDC) and familial hypertrophic cardiomyopathy (FHC). [provided by RefSeq, Jul 2008]

**Protein Pathways:** Cardiac muscle contraction, Dilated cardiomyopathy, Hypertrophic cardiomyopathy (HCM)

### Product images:



Coomassie blue staining of purified ACTC1 protein (Cat# [TP303655]). The protein was produced from HEK293T cells transfected with ACTC1 cDNA clone (Cat# [RC203655]) using MegaTran 2.0 (Cat# [TT210002]).