

Product datasheet for PH303643

beta Actin (ACTB) (NM_001101) Human Mass Spec Standard

Product data:

Product Type:	Mass Spec Standards
Description:	ACTB MS Standard C13 and N15-labeled recombinant protein (NP_001092)
Species:	Human
Expression Host:	HEK293
Expression cDNA Clone or AA Sequence:	RC203643
Predicted MW:	41.6 kDa
Protein Sequence:	>RC203643 representing NM_001101 Red=Cloning site Green=Tags(s)
	MDDIAALVVDNGSGMCKAGFAGDDAPRAVFPISIVGRPRHQGVMVGMGQKDSYVGDEAQSIRGILTLKYP IEHGIVTNWDDMEKIWHHTFYNELRVAPPEEHPVLLTEAPLNPKANREKMTQIMFETFNTPAMYVAIQAVL SLYASGRTTGIVMDSGDGVTHTVPIYEGYALPHAILRLDLAGRDLTDYLMKILTERGYSFTTTAEREIVR DIKEKLCYVALDFEQEMATAASSSSLEKSYELPDGQVITIGNERFRCPEALFQPSFLGMESCGIHETTFN SIMKCDVDIRKDLANTVLSGGTTMYPGIADRMQKEITALAPSTMKIKIIAPPERKYSVWIGGSILASLS TFQQMWISKQEYDESGPSIVHRKCF
	TRTRPLEQKLI SEEDLAANDILDYKDDDDKV
Tag:	C-Myc/DDK
Purity:	> 80% as determined by SDS-PAGE and Coomassie blue staining
Concentration:	>0.05 µg/µL as determined by microplate BCA method
Labeling Method:	Labeled with [U- ¹³ C ₆ , ¹⁵ N ₄]-L-Arginine and [U- ¹³ C ₆ , ¹⁵ N ₂]-L-Lysine
Buffer:	25 mM Tris-HCl, 100 mM glycine, pH 7.3
Storage:	Store at -80°C. Avoid repeated freeze-thaw cycles.
Stability:	Stable for 3 months from receipt of products under proper storage and handling conditions.
RefSeq:	NP_001092
RefSeq Size:	1793
RefSeq ORF:	1125
Synonyms:	BRWS1; PS1TP5BP1
Locus ID:	60



[View online »](#)

UniProt ID: [P60709](#), [Q1KLZ0](#)

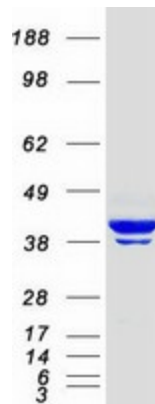
Cytogenetics: 7p22.1

Summary: This gene encodes one of six different actin proteins. Actins are highly conserved proteins that are involved in cell motility, structure, integrity, and intercellular signaling. The encoded protein is a major constituent of the contractile apparatus and one of the two nonmuscle cytoskeletal actins that are ubiquitously expressed. Mutations in this gene cause Baraitser-Winter syndrome 1, which is characterized by intellectual disability with a distinctive facial appearance in human patients. Numerous pseudogenes of this gene have been identified throughout the human genome. [provided by RefSeq, Aug 2017]

Protein Families: ES Cell Differentiation/IPS

Protein Pathways: Adherens junction, Arrhythmogenic right ventricular cardiomyopathy (ARVC), Dilated cardiomyopathy, Focal adhesion, Hypertrophic cardiomyopathy (HCM), Leukocyte transendothelial migration, Pathogenic Escherichia coli infection, Regulation of actin cytoskeleton, Tight junction, Vibrio cholerae infection, Viral myocarditis

Product images:



Coomassie blue staining of purified ACTB protein (Cat# [TP303643]). The protein was produced from HEK293T cells transfected with ACTB cDNA clone (Cat# [RC203643]) using MegaTran 2.0 (Cat# [TT210002]).