

## Product datasheet for PH303631

### CCDC28B (NM\_024296) Human Mass Spec Standard

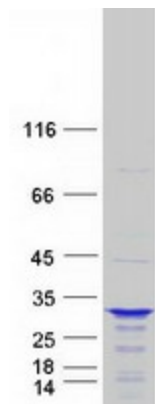
#### Product data:

Product Type:	Mass Spec Standards
Description:	CCDC28B MS Standard C13 and N15-labeled recombinant protein (NP_077272)
Species:	Human
Expression Host:	HEK293
Expression cDNA Clone or AA Sequence:	RC203631
Predicted MW:	22 kDa
Protein Sequence:	<p>&gt;RC203631 protein sequence</p> <p>Red=Cloning site Green=Tags(s)</p> <p>MDDKKKKRSPKPCLAQPAQAPGTLRRVPVPTSHSGSLALGLPHLPSPKQRAKFKRVGKEKCRPVLAGGGS            GSAGTPLQHSFLTETVDVYEMEGLLNLLNDFHSGRLQAFGKECSFEQLEHVREMQEKLARLHFSLDVCG            EEEDDEEEEDGVTEGLPEEQKTMADRNLDQLLSNLEDLSNSIQKLHLAENAEPEEQSAA</p> <p>TRTRPLEQKLISEEDLAANDILDYKDDDDKV</p>
Tag:	C-Myc/DDK
Purity:	> 80% as determined by SDS-PAGE and Coomassie blue staining
Concentration:	>0.05 µg/µL as determined by microplate BCA method
Labeling Method:	Labeled with [U- <sup>13</sup> C <sub>6</sub> , <sup>15</sup> N <sub>4</sub> ]-L-Arginine and [U- <sup>13</sup> C <sub>6</sub> , <sup>15</sup> N <sub>2</sub> ]-L-Lysine
Buffer:	25 mM Tris-HCl, 100 mM glycine, pH 7.3
Storage:	Store at -80°C. Avoid repeated freeze-thaw cycles.
Stability:	Stable for 3 months from receipt of products under proper storage and handling conditions.
RefSeq:	<u>NP_077272</u>
RefSeq Size:	1110
RefSeq ORF:	600
Locus ID:	79140
UniProt ID:	<u>Q9BUN5</u>
Cytogenetics:	1p35.2


[View online »](#)

**Summary:**

The product of this gene localizes to centrosomes and basal bodies. The protein colocalizes with several proteins associated with Bardet-Biedl syndrome (BBS) and participates in the regulation of cilia development. Alternative splicing results in multiple transcript variants. [provided by RefSeq, Jul 2014]

**Product images:**


Coomassie blue staining of purified CCDC28B protein (Cat# [TP303631]). The protein was produced from HEK293T cells transfected with CCDC28B cDNA clone (Cat# [RC203631]) using MegaTran 2.0 (Cat# [TT210002]).