

Product datasheet for PH303629

beta V Tubulin (TUBB) (NM_178014) Human Mass Spec Standard

Product data:

Product Type:	Mass Spec Standards
Description:	TUBB MS Standard C13 and N15-labeled recombinant protein (NP_821133)
Species:	Human
Expression Host:	HEK293
Expression cDNA Clone or AA Sequence:	RC203629
Predicted MW:	49.7 kDa
Protein Sequence:	>RC203629 protein sequence Red=Cloning site Green=Tags(s)

MREIVHIQAGQCQNQIGAKFWEVISDEHGIDPTGTYHGSDLQLDRISVYNEATGGKYVPRAILVDLEP
GTMDSVRSQPFQIFRPDNFVFGQSGAGNNWAKGHYTEGAELVDSVLDVVRKEAESCDCLOGFQLTHSLG
GGTGSGMGTLLISKIREEYPDRIMNTFSVVPSPKVSSTVVEPYNATLSVHQLVENTDETYCIDNEALYDI
CFRTLKLTPTYGDLNHLVSATMSGVTTCLRFPGQLNADLRKLAVNMVFPRLHFFMPGFAPLTSRGSQQ
YRALTVPELTQQVFDKNNMAACDPRHGRYLTVAAVFRGRMSMKEVDEQMLNVQNKSSYFVEWIPNNVK
TAVCDIPRGLKMAVTFIGNSTAIQELFKRISEQFTAMFRRKAFLHWYTGEGMDEMEFTEAESNMNDLVS
EYQQYQDATAEEEEEDFGEEAEEEE

TRTRPLEQKLISEEDLAANDILDYKDDDDKV

Tag:	C-Myc/DDK
Purity:	> 80% as determined by SDS-PAGE and Coomassie blue staining
Concentration:	>0.05 µg/µL as determined by microplate BCA method
Labeling Method:	Labeled with [U- ¹³ C ₆ , ¹⁵ N ₄]-L-Arginine and [U- ¹³ C ₆ , ¹⁵ N ₂]-L-Lysine
Buffer:	25 mM Tris-HCl, 100 mM glycine, pH 7.3
Storage:	Store at -80°C. Avoid repeated freeze-thaw cycles.
Stability:	Stable for 3 months from receipt of products under proper storage and handling conditions.
RefSeq:	<u>NP_821133</u>
RefSeq Size:	2688
RefSeq ORF:	1332
Synonyms:	CDCBM6; CSCSC1; M40; OK/SW-cl.56; TUBB1; TUBB5



[View online »](#)

Locus ID: 203068

UniProt ID: [P07437](#), [Q5SU16](#)

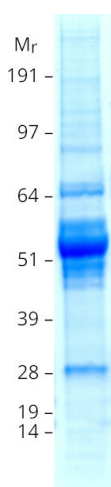
Cytogenetics: 6p21.33

Summary: This gene encodes a beta tubulin protein. This protein forms a dimer with alpha tubulin and acts as a structural component of microtubules. Mutations in this gene cause cortical dysplasia, complex, with other brain malformations 6. Alternative splicing results in multiple splice variants. There are multiple pseudogenes for this gene on chromosomes 1, 6, 7, 8, 9, and 13. [provided by RefSeq, Jun 2014]

Protein Families: Druggable Genome

Protein Pathways: Gap junction, Pathogenic Escherichia coli infection

Product images:



Coomassie blue staining of purified TUBB protein (Cat# [TP303629]). The protein was produced from HEK293T cells transfected with TUBB cDNA clone (Cat# [RC203629]) using MegaTran 2.0 (Cat# [TT210002]).