

## Product datasheet for PH303612

### ERGIC1 (NM\_001031711) Human Mass Spec Standard

#### Product data:

|                                       |   |
|---------------------------------------|---|
| Product Type:                         | Mass Spec Standards   |
| Description:                          | ERGIC1 MS Standard C13 and N15-labeled recombinant protein (NP_001026881) |
| Species:                              | Human   |
| Expression Host:                      | HEK293  |
| Expression cDNA Clone or AA Sequence: | RC203612  |
| Predicted MW:                         | 32.6 kDa  |
| Protein Sequence:                     | >RC203612 protein sequence<br>Red=Cloning site Green=Tags(s)              |

MPFDFRRFDIYRKVPKDLTQPTYTGAIISICCCFLFILFLFSEL TGFITTEVVNELYVDDPKDSSGGKID  
VSLNISLPHLHCELVGLDIQDEMGRHEVGHIDNSMKIPLNNGAGCRFEGQFSINKVPGNFHVSTHSATAQ  
PQNPDMTHTVIHKLSFGDTLQVQNIHGAFNALGGADRLTSNPLASHDYILKIVPTVYEDKSGKQRYSYQYT  
VANKEYVAYSHTGRIIPAIWFRYDLSPITVKYTERRQPL YRFITTICAIIGGFTVAGILDSCIFTASEA  
WKKIQLGKMH

TRTRPLEQKLISEEDLAANDILDYKDDDDKV

|                  |  |
|------------------|--|
| Tag:             | C-Myc/DDK  |
| Purity:          | > 80% as determined by SDS-PAGE and Coomassie blue staining  |
| Concentration:   | >0.05 µg/µL as determined by microplate BCA method   |
| Labeling Method: | Labeled with [U- <sup>13</sup> C <sub>6</sub> , <sup>15</sup> N <sub>4</sub> ]-L-Arginine and [U- <sup>13</sup> C <sub>6</sub> , <sup>15</sup> N <sub>2</sub> ]-L-Lysine |
| Buffer:          | 25 mM Tris-HCl, 100 mM glycine, pH 7.3   |
| Storage:         | Store at -80°C. Avoid repeated freeze-thaw cycles.   |
| Stability:       | Stable for 3 months from receipt of products under proper storage and handling conditions.   |
| RefSeq:          | <u>NP_001026881</u>  |
| RefSeq Size:     | 2949   |
| RefSeq ORF:      | 870  |
| Synonyms:        | AMC2; AMCN; ERGIC-32; ERGIC32; NET24   |
| Locus ID:        | 57222  |



[View online »](#)

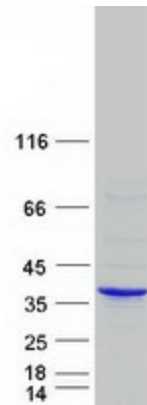
UniProt ID: [Q969X5](#)

Cytogenetics: 5q35.1

Summary: This gene encodes a cycling membrane protein which is an endoplasmic reticulum-golgi intermediate compartment (ERGIC) protein which interacts with other members of this protein family to increase their turnover. [provided by RefSeq, Jul 2008]

Protein Families: Transmembrane

### Product images:



Coomassie blue staining of purified ERGIC1 protein (Cat# [TP303612]). The protein was produced from HEK293T cells transfected with ERGIC1 cDNA clone (Cat# [RC203612]) using MegaTran 2.0 (Cat# [TT210002]).