

## Product datasheet for PH303601

### BCKDH kinase (BCKDK) (NM\_005881) Human Mass Spec Standard

#### Product data:

Product Type:	Mass Spec Standards
Description:	BCKDK MS Standard C13 and N15-labeled recombinant protein (NP_005872)
Species:	Human
Expression Host:	HEK293
Expression cDNA Clone or AA Sequence:	RC203601
Predicted MW:	46.4 kDa
Protein Sequence:	>RC203601 protein sequence Red=Cloning site Green=Tags(s)  MILASVLRSGPGGGLPLRPLLGPALALARSTSATDTHHVEMARERSKTVTSFYNQSAIDAAAEKPSVRL TPTMMLYAGRSQDGSLLKSAARYLQQELPVRIAHRIKGFRCPLPFIIGCNPTILHVHELIRAFQKLTDFP PIKDAQADEAQYQQLVRQLLDDHKDVVTLAEGLRERKHIIEDEKLVRYFLDKTLTSLRGIRMLATHHLAL HEDKPDFVGIICTRLSPKKIIEKWVDFARRLCEHKYGNAPRVRINGHVAARFPFIPMLDYILPELLKNA MRATMESHLDTPYNVPDVVITIANNDVDLIIRISDRGGGIAHKDLDRVMDYHFTTAEASTQDPRISPLFG HLDMHSGAQSGPMHGFGLPTSRAYAEYLGSLQLQLSLQGIGTDVYLRRLRHIDGreesfri  TRTRPLEQKLISEEDLAANDILDYKDDDDKV
Tag:	C-Myc/DDK
Purity:	> 80% as determined by SDS-PAGE and Coomassie blue staining
Concentration:	>0.05 µg/µL as determined by microplate BCA method
Labeling Method:	Labeled with [U- <sup>13</sup> C <sub>6</sub> , <sup>15</sup> N <sub>4</sub> ]-L-Arginine and [U- <sup>13</sup> C <sub>6</sub> , <sup>15</sup> N <sub>2</sub> ]-L-Lysine
Buffer:	25 mM Tris-HCl, 100 mM glycine, pH 7.3
Storage:	Store at -80°C. Avoid repeated freeze-thaw cycles.
Stability:	Stable for 3 months from receipt of products under proper storage and handling conditions.
RefSeq:	<u><a href="#">NP_005872</a></u>
RefSeq Size:	2144
RefSeq ORF:	1236
Synonyms:	BCKDKD; BDK
Locus ID:	10295



[View online »](#)

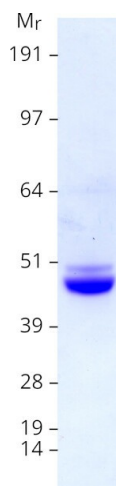
UniProt ID: [O14874](#), [A0A024QZA9](#)

Cytogenetics: 16p11.2

Summary: The branched-chain alpha-ketoacid dehydrogenase complex (BCKD) is an important regulator of the valine, leucine, and isoleucine catabolic pathways. The protein encoded by this gene is found in the mitochondrion, where it phosphorylates and inactivates BCKD. Several transcript variants encoding different isoforms have been found for this gene. [provided by RefSeq, Dec 2012]

Protein Families: Druggable Genome, Protein Kinase

### Product images:



Coomassie blue staining of purified BCKDK protein (Cat# [TP303601]). The protein was produced from HEK293T cells transfected with BCKDK cDNA clone (Cat# [RC203601]) using MegaTran 2.0 (Cat# [TT210002]).