

Product datasheet for PH303585

Cofilin 1 (CFL1) (NM_005507) Human Mass Spec Standard

Product data:

Product Type:	Mass Spec Standards
Description:	CFL1 MS Standard C13 and N15-labeled recombinant protein (NP_005498)
Species:	Human
Expression Host:	HEK293
Expression cDNA Clone or AA Sequence:	RC203585
Predicted MW:	18.5 kDa
Protein Sequence:	>RC203585 protein sequence Red=Cloning site Green=Tags(s) MASGVAVSDGVIKVFNDMKVRKSSTPEEVKRRKAVLFCLSEDKKNIILEEGKEILVGDVGQTVDDPYAT FVKMLPDKDCRYALYDATYETKESKKEDLVFIFWAPESAPLKSMMIYASSKDAIKKLTGIKHELQANCY EEVKDRCTLAEKLGGSAVISLEGKPL TRTRPLEQKLISEEDLAANDILDYKDDDDKV
Tag:	C-Myc/DDK
Purity:	> 80% as determined by SDS-PAGE and Coomassie blue staining
Concentration:	>0.05 µg/µL as determined by microplate BCA method
Labeling Method:	Labeled with [U- 13C6, 15N4]-L-Arginine and [U- 13C6, 15N2]-L-Lysine
Buffer:	25 mM Tris-HCl, 100 mM glycine, pH 7.3
Storage:	Store at -80°C. Avoid repeated freeze-thaw cycles.
Stability:	Stable for 3 months from receipt of products under proper storage and handling conditions.
RefSeq:	<u>NP_005498</u>
RefSeq Size:	1260
RefSeq ORF:	498
Synonyms:	CFL; cofilin; HEL-S-15
Locus ID:	1072
UniProt ID:	<u>P23528</u> , <u>V9HWI5</u>



[View online »](#)

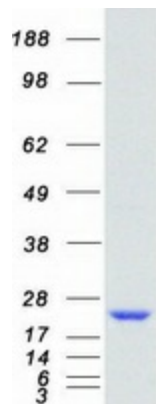
Cytogenetics: 11q13.1

Summary: The protein encoded by this gene can polymerize and depolymerize F-actin and G-actin in a pH-dependent manner. Increased phosphorylation of this protein by LIM kinase aids in Rho-induced reorganization of the actin cytoskeleton. Cofilin is a widely distributed intracellular actin-modulating protein that binds and depolymerizes filamentous F-actin and inhibits the polymerization of monomeric G-actin in a pH-dependent manner. It is involved in the translocation of actin-cofilin complex from cytoplasm to nucleus.[supplied by OMIM, Apr 2004]

Protein Families: Druggable Genome

Protein Pathways: Axon guidance, Fc gamma R-mediated phagocytosis, Regulation of actin cytoskeleton

Product images:



Coomassie blue staining of purified CFL1 protein (Cat# [TP303585]). The protein was produced from HEK293T cells transfected with CFL1 cDNA clone (Cat# [RC203585]) using MegaTran 2.0 (Cat# [TT210002]).