

## Product datasheet for PH303582

### SERBP1 (NM\_015640) Human Mass Spec Standard

#### Product data:

Product Type:	Mass Spec Standards
Description:	SERBP1 MS Standard C13 and N15-labeled recombinant protein (NP_056455)
Species:	Human
Expression Host:	HEK293
Expression cDNA Clone or AA Sequence:	RC203582
Predicted MW:	42.4 kDa
Protein Sequence:	>RC203582 protein sequence Red=Cloning site Green=Tags(s)

MPGHLQEGFGCVVTNRFQQLFDDSDPFEVLKAAENKKKEAGGGVGGPGAKSAAQAAAQTSNAAGKQL  
RKESQKDRKNPLPPSVGVVDKKEETQPPVALKKEGIRRVGRRPDQQLQGEKIIDRRPERRPPRERRFEK  
PLEEKEGEGEFSVDRPIIDRPIRGRGGLGRGRGGRGMGRGDGFDNRGKREFDRHSGSDRSLKHEDKR  
GGSGSHNWGTVKDELTDLDQSNVTEETPEGEEHHPVADTENKENEVEEVKEEGPKEMTLDEWKAIQNKDR  
AKVEFNIRKPNEGADGQWKKGFVLHKSKEEAHAEDSVMDDHFRKPAANDITSQLEINFGDLGRPGRGGRG  
GRGGRGGRPNRGRSRTDKSSASAPDVEDDPEAFPALA

TRTRPLEQKLISEEDLAANDILDYKDDDDKV

Tag:	C-Myc/DDK
Purity:	> 80% as determined by SDS-PAGE and Coomassie blue staining
Concentration:	>0.05 µg/µL as determined by microplate BCA method
Labeling Method:	Labeled with [U- <sup>13</sup> C <sub>6</sub> , <sup>15</sup> N <sub>4</sub> ]-L-Arginine and [U- <sup>13</sup> C <sub>6</sub> , <sup>15</sup> N <sub>2</sub> ]-L-Lysine
Buffer:	25 mM Tris-HCl, 100 mM glycine, pH 7.3
Storage:	Store at -80°C. Avoid repeated freeze-thaw cycles.
Stability:	Stable for 3 months from receipt of products under proper storage and handling conditions.
RefSeq:	<a href="#">NP_056455</a>
RefSeq Size:	6701
RefSeq ORF:	1161
Synonyms:	CGI-55; CHD3IP; HABP4L; PAI-RBP1; PAIRBP1
Locus ID:	26135



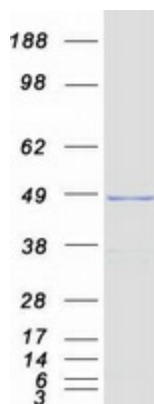
[View online »](#)

UniProt ID: [Q8NC51](#), [Q5VU21](#), [Q63HR1](#)

Cytogenetics: 1p31.3

Summary: May play a role in the regulation of mRNA stability. Binds to the 3'-most 134 nt of the SERPINE1/PAI1 mRNA, a region which confers cyclic nucleotide regulation of message decay. Seems to play a role in PML-nuclear bodies formation (PubMed:28695742).[UniProtKB/Swiss-Prot Function]

### Product images:



Coomassie blue staining of purified SERBP1 protein (Cat# [TP303582]). The protein was produced from HEK293T cells transfected with SERBP1 cDNA clone (Cat# [RC203582]) using MegaTran 2.0 (Cat# [TT210002]).