

Product datasheet for PH303570

VILIP3 (HPCAL1) (NM_002149) Human Mass Spec Standard

Product data:

Product Type:	Mass Spec Standards
Description:	HPCAL1 MS Standard C13 and N15-labeled recombinant protein (NP_002140)
Species:	Human
Expression Host:	HEK293
Expression cDNA Clone or AA Sequence:	RC203570
Predicted MW:	22.3 kDa
Protein Sequence:	>RC203570 protein sequence Red =Cloning site Green =Tags(s) MGKQNSKLRPEVLQDLRENTFTDHELQEWYKGLKDCPTGHLTVDEFKKIYANFFPYGDASKFAEHVFR TFDTNGDGTIDFREFIIALSVTSRGKLEQKLKWFASMYDLGNGYISRSEMLEIVQAIYKMVSSVMKMPE DESTPEKRTDKIFRQMDTNDGKLSLEEFIRGAKSDPSIVRLLQCDPSSASQF TR TRPLEQKLISEEDLAANDILDYKDDDDKV
Tag:	C-Myc/DDK
Purity:	> 80% as determined by SDS-PAGE and Coomassie blue staining
Concentration:	>0.05 µg/µL as determined by microplate BCA method
Labeling Method:	Labeled with [U- ¹³ C ₆ , ¹⁵ N ₄]-L-Arginine and [U- ¹³ C ₆ , ¹⁵ N ₂]-L-Lysine
Buffer:	25 mM Tris-HCl, 100 mM glycine, pH 7.3
Storage:	Store at -80°C. Avoid repeated freeze-thaw cycles.
Stability:	Stable for 3 months from receipt of products under proper storage and handling conditions.
RefSeq:	NP_002140
RefSeq Size:	1779
RefSeq ORF:	579
Synonyms:	BDR1; HLP2; VILIP-3
Locus ID:	3241
UniProt ID:	P37235 , Q6FGY1 , O75544

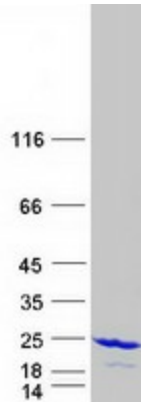


[View online »](#)

Cytogenetics: 2p25.1

Summary: The protein encoded by this gene is a member of neuron-specific calcium-binding proteins family found in the retina and brain. It is highly similar to human hippocalcin protein and nearly identical to the rat and mouse hippocalcin like-1 proteins. It may be involved in the calcium-dependent regulation of rhodopsin phosphorylation and may be of relevance for neuronal signalling in the central nervous system. Several alternatively spliced transcript variants encoding the same protein have been found for this gene. [provided by RefSeq, Apr 2012]

Product images:



Coomassie blue staining of purified HPCAL1 protein (Cat# [TP303570]). The protein was produced from HEK293T cells transfected with HPCAL1 cDNA clone (Cat# [RC203570]) using MegaTran 2.0 (Cat# [TT210002]).