

## Product datasheet for PH303568

### SMCR7L (MIEF1) (NM\_019008) Human Mass Spec Standard

#### Product data:

Product Type:	Mass Spec Standards
Description:	SMCR7L MS Standard C13 and N15-labeled recombinant protein (NP_061881)
Species:	Human
Expression Host:	HEK293
Expression cDNA Clone or AA Sequence:	RC203568
Predicted MW:	51.3 kDa
Protein Sequence:	>RC203568 protein sequence Red=Cloning site Green=Tags(s)

MAGAGERKGGKDDNGIGTAIDFVLSNARLVLGVGGAAMLGIATLAVKRMVDRAISAPTSPTRLSHSGKRS  
WEEPNNWVGSPRLLNRDMKTGLSRSLQTLPTDSTFDTDTCPPRPKPVARKGQVDLKKSRRLMSLQEKLL  
TYRNRRAAIPAGEQARAKQAVIDCAELRSFLRAKLPDMPLRDMYLSGSLYDDLQVVTADHIQLIVPLVL  
EQNLWSCIPGEDTIMNVPGFFLVRRENPEYFPRGSSYWDRCVGGYLSPKTVADTFEKVVAGSINWPAIG  
SLLDYVIRPAPPEALTEVQYERDKHLFIDFLPSVTLGDTVLVAKPHRLAQYDNLWRLSLRPAETARLR  
ALDQADSGCRSLCLKILKAICKSTPALGHLTASQLTNVILHLAQEEADWSPDMLADRFLQALRGLISYLE  
AGVLPALNPKVNLFAELTPEEIDELGYTLYCSLSEPEVLLQT

TRTRPLEQKLISEEDLAANDILDYKDDDDKV

Tag:	C-Myc/DDK
Purity:	> 80% as determined by SDS-PAGE and Coomassie blue staining
Concentration:	>0.05 µg/µL as determined by microplate BCA method
Labeling Method:	Labeled with [U- <sup>13</sup> C <sub>6</sub> , <sup>15</sup> N <sub>4</sub> ]-L-Arginine and [U- <sup>13</sup> C <sub>6</sub> , <sup>15</sup> N <sub>2</sub> ]-L-Lysine
Buffer:	25 mM Tris-HCl, 100 mM glycine, pH 7.3
Storage:	Store at -80°C. Avoid repeated freeze-thaw cycles.
Stability:	Stable for 3 months from receipt of products under proper storage and handling conditions.
RefSeq:	<u><a href="#">NP_061881</a></u>
RefSeq Size:	5730
RefSeq ORF:	1389
Synonyms:	AltMIEF1; dj1104E15.3; HSU79252; MID51; MIEF1-MP; SMCR7L



[View online »](#)

Locus ID: 54471

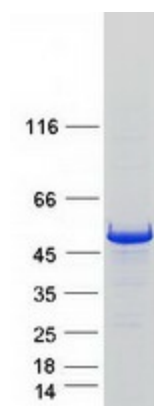
UniProt ID: [Q9NOG6](#), [A0A024R1L3](#)

Cytogenetics: 22q13.1

**Summary:** Mitochondrial outer membrane protein which regulates mitochondrial fission. Promotes the recruitment and association of the fission mediator dynamin-related protein 1 (DNM1L) to the mitochondrial surface independently of the mitochondrial fission FIS1 and MFF proteins. Regulates DNM1L GTPase activity and DNM1L oligomerization. Binds ADP and can also bind GDP, although with lower affinity. Does not bind CDP, UDP, ATP, AMP or GTP. Inhibits DNM1L GTPase activity in the absence of bound ADP. Requires ADP to stimulate DNM1L GTPase activity and the assembly of DNM1L into long, oligomeric tubules with a spiral pattern, as opposed to the ring-like DNM1L oligomers observed in the absence of bound ADP. Does not require ADP for its function in recruiting DNM1L.[UniProtKB/Swiss-Prot Function]

**Protein Families:** Transmembrane

### Product images:



Coomassie blue staining of purified MIEF1 protein (Cat# [TP303568]). The protein was produced from HEK293T cells transfected with MIEF1 cDNA clone (Cat# [RC203568]) using MegaTran 2.0 (Cat# [TT210002]).