

## Product datasheet for PH303564

### RERG (NM\_032918) Human Mass Spec Standard

#### Product data:

Product Type:	Mass Spec Standards
Description:	RERG MS Standard C13 and N15-labeled recombinant protein (NP_116307)
Species:	Human
Expression Host:	HEK293
Expression cDNA Clone or AA Sequence:	RC203564
Predicted MW:	22.6 kDa
Protein Sequence:	>RC203564 protein sequence <b>Red</b> =Cloning site <b>Green</b> =Tags(s)  MAKSAEVKLAIFGRAGVGKSALVVRFLTKRFIWEYDPTLESTYRHQATIDDEVVSMEILDTAGQEDTIQR EGHMRWGEGFVLVDITDRGSFEEVLPLKNILDEIKKPKNVTLILVGNKADLDHSRQVSTEEGEKLATEL ACAFYECSACTGEGNITEIFYELCREVRRRRMVQGKTRRRSSTTHVKQAINKMLTKISS  <b>TR</b> TRPLEQKLISEEDLAANDILDYKDDDDKV
Tag:	C-Myc/DDK
Purity:	> 80% as determined by SDS-PAGE and Coomassie blue staining
Concentration:	>0.05 µg/µL as determined by microplate BCA method
Labeling Method:	Labeled with [U- 13C6, 15N4]-L-Arginine and [U- 13C6, 15N2]-L-Lysine
Buffer:	25 mM Tris-HCl, 100 mM glycine, pH 7.3
Storage:	Store at -80°C. Avoid repeated freeze-thaw cycles.
Stability:	Stable for 3 months from receipt of products under proper storage and handling conditions.
RefSeq:	<a href="#">NP_116307</a>
RefSeq Size:	2325
RefSeq ORF:	597
Locus ID:	85004
UniProt ID:	<a href="#">Q96A58</a> , <a href="#">A0A024RAT4</a>
Cytogenetics:	12p12.3

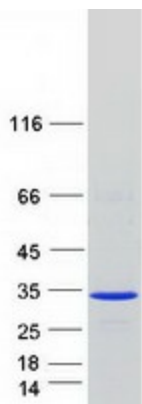


[View online »](#)

**Summary:** RERG, a member of the RAS superfamily of GTPases, inhibits cell proliferation and tumor formation (Finlin et al., 2001 [PubMed 11533059]).[supplied by OMIM, Mar 2009]

**Protein Families:** Druggable Genome

**Product images:**



Coomassie blue staining of purified RERG protein (Cat# [TP303564]). The protein was produced from HEK293T cells transfected with RERG cDNA clone (Cat# [RC203564]) using MegaTran 2.0 (Cat# [TT210002]).