

Product datasheet for PH303556

RCC1 (NM_001048199) Human Mass Spec Standard

Product data:

Product Type:	Mass Spec Standards
Description:	SNHG3 MS Standard C13 and N15-labeled recombinant protein (NP_001041664)
Species:	Human
Expression Host:	HEK293
Expression cDNA Clone or AA Sequence:	RC203556
Predicted MW:	45 kDa
Protein Sequence:	>RC203556 protein sequence Red=Cloning site Green=Tags(s)

MSPKRIAKRRSPADAIPKSKKVKVSHRSHSTEPGLVLTGQGDVQQLGLGENVMERKKPALVSIPELVV
QAEAGMHTVCLSKSGQVYVYFGCNDEGALGRDTSVEGSEMVPKGVELQEKVVQVSAGDSHTAALTDGGRV
FLWGSFRDNNGVIGLLEPMKSMVPVQVQLDVPVVKVASGNDHLVMLTADGDLYTLGCGEQQLGRVPEL
FANRGGRQGLERLLVPKCVMLKSRGSRGHVRFQDAFCGAYFTFAISHEGHVYGFGLSNYHQLGTPGTESC
FIPQNLTSFKNSTKSWVGFSGGQHHTVCMDESEGKAYS LGRAEYGRLLGEGAEKSIPTLISRLPAVSSV
ACGASVGYAVTKDGRVFAWGMGTNYQLGTQDEDAWSPVEMMGKQLENRVVLSVSSGGQHTVLLVKDKEQ
S

TRTRPLEQKLI SEEDLAANDILDYKDDDDKV

Tag:	C-Myc/DDK
Purity:	> 80% as determined by SDS-PAGE and Coomassie blue staining
Concentration:	>0.05 µg/µL as determined by microplate BCA method
Labeling Method:	Labeled with [U- ¹³ C ₆ , ¹⁵ N ₄]-L-Arginine and [U- ¹³ C ₆ , ¹⁵ N ₂]-L-Lysine
Buffer:	25 mM Tris-HCl, 100 mM glycine, pH 7.3
Storage:	Store at -80°C. Avoid repeated freeze-thaw cycles.
Stability:	Stable for 3 months from receipt of products under proper storage and handling conditions.
RefSeq:	<u>NP_001041664</u>
RefSeq Size:	2715
RefSeq ORF:	1263
Synonyms:	CHC1; RCC1-I; SNHG3-RCC1



[View online »](#)

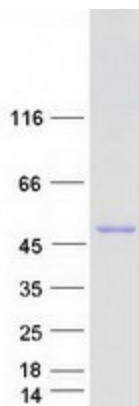
Locus ID: 1104

UniProt ID: [P18754](#), [Q5T081](#)

Cytogenetics: 1p35.3

Summary: Guanine-nucleotide releasing factor that promotes the exchange of Ran-bound GDP by GTP, and thereby plays an important role in RAN-mediated functions in nuclear import and mitosis (PubMed:1944575, PubMed:17435751, PubMed:20668449, PubMed:22215983, PubMed:11336674). Contributes to the generation of high levels of chromosome-associated, GTP-bound RAN, which is important for mitotic spindle assembly and normal progress through mitosis (PubMed:12194828, PubMed:17435751, PubMed:22215983). Via its role in maintaining high levels of GTP-bound RAN in the nucleus, contributes to the release of cargo proteins from importins after nuclear import (PubMed:22215983). Involved in the regulation of onset of chromosome condensation in the S phase (PubMed:3678831). Binds both to the nucleosomes and double-stranded DNA (PubMed:17435751, PubMed:18762580).
[UniProtKB/Swiss-Prot Function]

Product images:



Coomassie blue staining of purified RCC1 protein (Cat# [TP303556]). The protein was produced from HEK293T cells transfected with RCC1 cDNA clone (Cat# [RC203556]) using MegaTran 2.0 (Cat# [TT210002]).