

Product datasheet for PH303545

SOX10 (NM_006941) Human Mass Spec Standard

Product data:

Product Type:	Mass Spec Standards
Description:	SOX10 MS Standard C13 and N15-labeled recombinant protein (NP_008872)
Species:	Human
Expression Host:	HEK293
Expression cDNA Clone or AA Sequence:	RC203545
Predicted MW:	49.9 kDa
Protein Sequence:	>RC203545 protein sequence Red=Cloning site Green=Tags(s)

MAEEQDLSEVELSPVGSEEPRLSPGSAPSLGPDGGGGGSLRASPGGELGKVKKEQQDGEADDDKFPV
CIREAVSQVLSGYDWTLVPMVVRVNGASKSKPHVKRPMNAFMVWAQAARRKLADQYPHLHNAELSKTLGK
LWRLNESDKRPFIEEAERLRMQHKDHPDYKQPRRRKNGKAAQGEAECPGGEAQGGTAAIQAHYKSA
HLDHRHPGEGSPMSDGNPEHPGSHGPPPTTPKTELQSGKADPKRDGRSMGEGGKPHIDFGNVDIGE
ISHEVMSNMETFDVAELDQYLPPNGHPGHVSSYSAAGYGLGSALAVASGHSAWISKPPGVALPTVSPPGV
DAKAQVKTETAGPQGPPHYTDQPSTSQIAYTSLSLPHYGSAFPISIRPQFDYSDHQPSGPYYGHSGQASG
LYSAFSYMGPSQRPLYTAISDPSPSGPQSHSPHWEPVYTTLSRP

TRTRPLEQKLISEEDLAANDILDYKDDDDKV

Tag:	C-Myc/DDK
Purity:	> 80% as determined by SDS-PAGE and Coomassie blue staining
Concentration:	>0.05 µg/µL as determined by microplate BCA method
Labeling Method:	Labeled with [U- ¹³ C ₆ , ¹⁵ N ₄]-L-Arginine and [U- ¹³ C ₆ , ¹⁵ N ₂]-L-Lysine
Buffer:	25 mM Tris-HCl, 100 mM glycine, pH 7.3
Storage:	Store at -80°C. Avoid repeated freeze-thaw cycles.
Stability:	Stable for 3 months from receipt of products under proper storage and handling conditions.
RefSeq:	<u>NP_008872</u>
RefSeq Size:	2882
RefSeq ORF:	1398
Synonyms:	DOM; PCWH; WS2E; WS4; WS4C



[View online »](#)

Locus ID: 6663

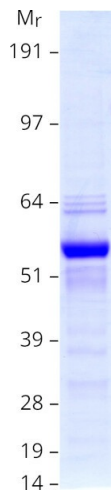
UniProt ID: [P56693](#), [A0A024R1N6](#)

Cytogenetics: 22q13.1

Summary: This gene encodes a member of the SOX (SRY-related HMG-box) family of transcription factors involved in the regulation of embryonic development and in the determination of the cell fate. The encoded protein may act as a transcriptional activator after forming a protein complex with other proteins. This protein acts as a nucleocytoplasmic shuttle protein and is important for neural crest and peripheral nervous system development. Mutations in this gene are associated with Waardenburg-Shah and Waardenburg-Hirschsprung disease. [provided by RefSeq, Jul 2008]

Protein Families: Adult stem cells, ES Cell Differentiation/IPS, Induced pluripotent stem cells, Transcription Factors

Product images:



Coomassie blue staining of purified SOX10 protein (Cat# [TP303545]). The protein was produced from HEK293T cells transfected with SOX10 cDNA clone (Cat# [RC203545]) using MegaTran 2.0 (Cat# [TT210002]).