

## Product datasheet for PH303538

### RPP25 (NM\_017793) Human Mass Spec Standard

#### Product data:

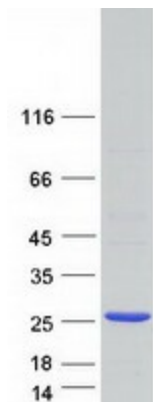
Product Type:	Mass Spec Standards
Description:	RPP25 MS Standard C13 and N15-labeled recombinant protein (NP_060263)
Species:	Human
Expression Host:	HEK293
Expression cDNA Clone or AA Sequence:	RC203538
Predicted MW:	20.6 kDa
Protein Sequence:	>RC203538 protein sequence Red=Cloning site Green=Tags(s)  MENFRKVRSEEAPAGCGAEGGGPGSGPFADLAPGAVHMRVKEGSKIRNLMAFATASMAQPATRAIVFSGC GRATTKTVTCAEILKRRLAGLHQVTRLRYRSVREWQSLPPGPTQGQTPGEPAAASLVLKNVPGLAILLS KDALDPRQPGYQPPNPHPGPSSPPAAPASKRSLGEPAAAGEGSAKRSQPEPGVADEDQTA  TRTRPLEQKLISEEDLAANDILDYKDDDDKV
Tag:	C-Myc/DDK
Purity:	> 80% as determined by SDS-PAGE and Coomassie blue staining
Concentration:	>0.05 µg/µL as determined by microplate BCA method
Labeling Method:	Labeled with [U- <sup>13</sup> C <sub>6</sub> , <sup>15</sup> N <sub>4</sub> ]-L-Arginine and [U- <sup>13</sup> C <sub>6</sub> , <sup>15</sup> N <sub>2</sub> ]-L-Lysine
Buffer:	25 mM Tris-HCl, 100 mM glycine, pH 7.3
Storage:	Store at -80°C. Avoid repeated freeze-thaw cycles.
Stability:	Stable for 3 months from receipt of products under proper storage and handling conditions.
RefSeq:	<a href="#">NP_060263</a>
RefSeq Size:	2333
RefSeq ORF:	597
Locus ID:	54913
UniProt ID:	<a href="#">Q9BUL9</a>
Cytogenetics:	15q24.2



[View online »](#)

**Summary:**

Component of ribonuclease P, a ribonucleoprotein complex that generates mature tRNA molecules by cleaving their 5'-ends (PubMed:12003489, PubMed:16723659, PubMed:30454648). Also a component of the MRP ribonuclease complex, which cleaves pre-rRNA sequences (PubMed:28115465).[UniProtKB/Swiss-Prot Function]

**Product images:**

Coomassie blue staining of purified RPP25 protein (Cat# [TP303538]). The protein was produced from HEK293T cells transfected with RPP25 cDNA clone (Cat# [RC203538]) using MegaTran 2.0 (Cat# [TT210002]).