

## Product datasheet for PH303537

### SPINT1 (NM\_001032367) Human Mass Spec Standard

#### Product data:

Product Type:	Mass Spec Standards
Description:	SPINT1 MS Standard C13 and N15-labeled recombinant protein (NP_001027539)
Species:	Human
Expression Host:	HEK293
Expression cDNA Clone or AA Sequence:	RC203537
Predicted MW:	56.9 kDa
Protein Sequence:	>RC203537 protein sequence Red=Cloning site Green=Tags(s)

MAPARTMARARLAPAGIPAVALWLLCTLGLQGTQAGPPPAPPGLPAGADCLNSFTAGVPGFVLDTNASVS  
NGATFLESPTVRRGWDCVRACCTTQNCNLALVELQPDRGEDAIAACFLINCLYEQNFVCKFAPREGFINY  
LTREVYRSYRQLRTQGGGGSGIPKAWAGIDLKVQPQEPLVLKDVENDWRLLRGDTDVRVERKDPNQVEL  
WGLKEGTYLFQLTVTSSDHPEDTANVTIVLSTKQTEDYCLASNKVGRCRGSFPRWYDPTQICKSFVY  
GGCLGNKNNYLREEECILACRGVQGPSMERRHPVCSGTCQPTQFRCSNGCCIDSFLECDTPNCPDASDE  
AACEKYTSGFDELQRIHFPSDKGHCVDLPDTGLCKESIPRWYYPNFSEHCARFTYGGCYGNKNNFEEEQQ  
CLESCRGISKKDVFGLRREIPIPISTGSVEMAVAVFLVICIVVVVAILGYCFFKNQRKDFHGHHPPTP  
ASSTVSTTEDTEHLVYNHTTRPL

TRTRPLEQKLISEEDLAANDILDYKDDDDKV

Tag:	C-Myc/DDK
Purity:	> 80% as determined by SDS-PAGE and Coomassie blue staining
Concentration:	>0.05 µg/µL as determined by microplate BCA method
Labeling Method:	Labeled with [U- <sup>13</sup> C <sub>6</sub> , <sup>15</sup> N <sub>4</sub> ]-L-Arginine and [U- <sup>13</sup> C <sub>6</sub> , <sup>15</sup> N <sub>2</sub> ]-L-Lysine
Buffer:	25 mM Tris-HCl, 100 mM glycine, pH 7.3
Storage:	Store at -80°C. Avoid repeated freeze-thaw cycles.
Stability:	Stable for 3 months from receipt of products under proper storage and handling conditions.
RefSeq:	<a href="#">NP_001027539</a>
RefSeq Size:	2342
RefSeq ORF:	1539



[View online »](#)

**Synonyms:** HAI; HAI1; MANSC2

**Locus ID:** 6692

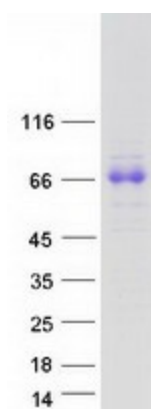
**UniProt ID:** [O43278](#)

**Cytogenetics:** 15q15.1

**Summary:** The protein encoded by this gene is a member of the Kunitz family of serine protease inhibitors. The protein is a potent inhibitor specific for HGF activator and is thought to be involved in the regulation of the proteolytic activation of HGF in injured tissues. Alternative splicing results in multiple variants encoding different isoforms. [provided by RefSeq, Jul 2008]

**Protein Families:** Druggable Genome, Secreted Protein, Transmembrane

### Product images:



Coomassie blue staining of purified SPINT1 protein (Cat# [TP303537]). The protein was produced from HEK293T cells transfected with SPINT1 cDNA clone (Cat# [RC203537]) using MegaTran 2.0 (Cat# [TT210002]).