

Product datasheet for PH303535

XPNPEP1 (NM_020383) Human Mass Spec Standard

Product data:

Product Type:	Mass Spec Standards
Description:	XPNPEP1 MS Standard C13 and N15-labeled recombinant protein (NP_065116)
Species:	Human
Expression Host:	HEK293
Expression cDNA Clone or AA Sequence:	RC203535
Predicted MW:	69.9 kDa
Protein Sequence:	>RC203535 protein sequence Red=Cloning site Green=Tags(s)

MPPKVTSELLRQLRQAMRNSEYVTEPIQAYIIPSGDAHQSEYIAPDCRRAFVSGFDGSAGTAIITEEHA
AMWTDGRYFLQAAKQMDSNWTLMKMGLKDTPTQEDWLVSVLPEGSRVGVDPDLPDIPTDYWKMAKVLRSAG
HHLIPVKENLVDKIWTDRPERPCKPLLTLGLDYGTSWKDKVADLRLKMAERNVMWFVVTALDEIAWLFN
LRGSDVEHNPVFFSYAIIIGLETIMLFIDGDRIDAPSVKEHLLLDLGLAEYRIQVHPYKSLSELKALCA
DLSPREKVWVSDKASYAVSETIPKDHRCMPYTPICIAKAVKNSAESEGMRRRAHIKDAVALCELFWLEK
EVPKGGVTEISAADKAEFRQQADFVDSLFPPTISSTGPNGAIHYAPVPETNRTLSDDEVYLIDSGAQY
KDGTTDVTRTMHFGTPTAYEKECFYVLKGHIAVSAVFPPTGKGLLDSFARSALWDSGLDYLHGTGHH
VGSFLNVHEGPCGISYKTFSDPELEAGMIVTDEPGYYEDGAFGIRIENVLVVPVKTKYNFNRRGSLTFE
PLTLVPIQTKMIDVDSLTDKECDWLNNYHLTCRDVIGKELQKQGRQEALEWLIRETQPISKQH

TRTRPLEQKLI SEEDLAANDILDYKDDDDKV

Tag:	C-Myc/DDK
Purity:	> 80% as determined by SDS-PAGE and Coomassie blue staining
Concentration:	>0.05 µg/µL as determined by microplate BCA method
Labeling Method:	Labeled with [U- ¹³ C ₆ , ¹⁵ N ₄]-L-Arginine and [U- ¹³ C ₆ , ¹⁵ N ₂]-L-Lysine
Buffer:	25 mM Tris-HCl, 100 mM glycine, pH 7.3
Storage:	Store at -80°C. Avoid repeated freeze-thaw cycles.
Stability:	Stable for 3 months from receipt of products under proper storage and handling conditions.
RefSeq:	NP_065116
RefSeq Size:	2557
RefSeq ORF:	1869



[View online »](#)

Synonyms: APP1; SAMP; XPNPEP; XPNPEPL; XPNPEPL1

Locus ID: 7511

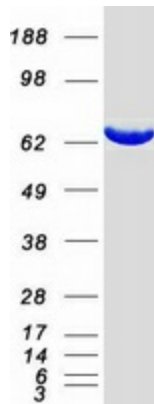
UniProt ID: [Q9NQW7](#), [Q9NQW7-3](#)

Cytogenetics: 10q25.1

Summary: This gene encodes the cytosolic form of a metalloaminopeptidase that catalyzes the cleavage of the N-terminal amino acid adjacent to a proline residue. The gene product may play a role in degradation and maturation of tachykinins, neuropeptides, and peptide hormones. Alternative splicing results in multiple transcript variants.[provided by RefSeq, Nov 2009]

Protein Families: Druggable Genome, Protease

Product images:



Coomassie blue staining of purified XPNPEP1 protein (Cat# [TP303535]). The protein was produced from HEK293T cells transfected with XPNPEP1 cDNA clone (Cat# [RC203535]) using MegaTran 2.0 (Cat# [TT210002]).