

## Product datasheet for PH303531

### COPE (NM\_007263) Human Mass Spec Standard

#### Product data:

Product Type:	Mass Spec Standards
Description:	COPE MS Standard C13 and N15-labeled recombinant protein (NP_009194)
Species:	Human
Expression Host:	HEK293
Expression cDNA Clone or AA Sequence:	RC203531
Predicted MW:	34.5 kDa
Protein Sequence:	>RC203531 protein sequence Red=Cloning site Green=Tags(s)

MAPPAPGPASGGSGEVDELFDVKNFYIGSYQQCINEAQRVKLSSPERDVERDVFLYRAYLAQRKFGVVL  
DEIKPSSAPELQAVRMFADYLAHESRRDSIVAELDREMSRSDVTNTTFLMAASIYLDQNPDAALRAL  
HQGDSLECTAMTVQILLKLDRLDLARKELKRMQDLDEDATLTQLATAWVSLATGGKQLQDAYYIFQEMAD  
KCSPTLLLLNGQAACHMAQGRWEAAEGLLQEALDKDSGYPETLVNLIIVLSQHLGKPEVTNRYLSQLKDA  
HRSHPFKEYQAKENDFDRLVLQYAPSA

TRTRPLEQKLISEEDLAANDILDYKDDDDKV

Tag:	C-Myc/DDK
Purity:	> 80% as determined by SDS-PAGE and Coomassie blue staining
Concentration:	>0.05 µg/µL as determined by microplate BCA method
Labeling Method:	Labeled with [U- <sup>13</sup> C <sub>6</sub> , <sup>15</sup> N <sub>4</sub> ]-L-Arginine and [U- <sup>13</sup> C <sub>6</sub> , <sup>15</sup> N <sub>2</sub> ]-L-Lysine
Buffer:	25 mM Tris-HCl, 100 mM glycine, pH 7.3
Storage:	Store at -80°C. Avoid repeated freeze-thaw cycles.
Stability:	Stable for 3 months from receipt of products under proper storage and handling conditions.
RefSeq:	<a href="#">NP_009194</a>
RefSeq Size:	1134
RefSeq ORF:	924
Synonyms:	epsilon-COP
Locus ID:	11316



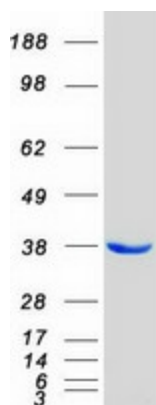
[View online »](#)

UniProt ID: [O14579](#)

Cytogenetics: 19p13.11

**Summary:** The product of this gene is an epsilon subunit of coatomer protein complex. Coatomer is a cytosolic protein complex that binds to dilysine motifs and reversibly associates with Golgi non-clathrin-coated vesicles. It is required for budding from Golgi membranes, and is essential for the retrograde Golgi-to-ER transport of dilysine-tagged proteins. Coatomer complex consists of at least the alpha, beta, beta', gamma, delta, epsilon and zeta subunits. Alternatively spliced transcript variants encoding different isoforms have been identified. [provided by RefSeq, Jul 2008]

### Product images:



Coomassie blue staining of purified COPE protein (Cat# [TP303531]). The protein was produced from HEK293T cells transfected with COPE cDNA clone (Cat# [RC203531]) using MegaTran 2.0 (Cat# [TT210002]).