

Product datasheet for PH303500

IRF1 (NM_002198) Human Mass Spec Standard

Product data:

Product Type:	Mass Spec Standards
Description:	IRF1 MS Standard C13 and N15-labeled recombinant protein (NP_002189)
Species:	Human
Expression Host:	HEK293
Expression cDNA Clone or AA Sequence:	RC203500
Predicted MW:	36.5 kDa
Protein Sequence:	>RC203500 protein sequence Red=Cloning site Green=Tags(s) MPITRMRMPWLEMQINSNQIPGLIWINKEEMIFQIPWKHAAKHGWDINKDAFLFRSWAIHTGRYKAGEK EPDPKTKANFRCAMNSLPDIEEVKDQSRNKGSSAVRVYRMLPPLTKNQRKERKSKSSRDAKSKAKRKSC GDSSPDTFSDGLSSSTLPDDHSSYTVPGYMQDLEVEQALTPALSPCAVSSTLPDWHIPVEVVPDSTLDLY NFQVSPMPSTSEATTDEDEEGKLPEDIMKLLSEQSEWQPTNVDGKGYLLNEPGVQPTSVYGDVFSCKEEPEI DSPGGDIGLSLQRVFTDLKNMDATWLDSELLTPVRLPSIQAIPCAP TRTRPLEQKLISEEDLAANDILDYKDDDDKV
Tag:	C-Myc/DDK
Purity:	> 80% as determined by SDS-PAGE and Coomassie blue staining
Concentration:	>0.05 µg/µL as determined by microplate BCA method
Labeling Method:	Labeled with [U- ¹³ C ₆ , ¹⁵ N ₄]-L-Arginine and [U- ¹³ C ₆ , ¹⁵ N ₂]-L-Lysine
Buffer:	25 mM Tris-HCl, 100 mM glycine, pH 7.3
Storage:	Store at -80°C. Avoid repeated freeze-thaw cycles.
Stability:	Stable for 3 months from receipt of products under proper storage and handling conditions.
RefSeq:	NP_002189
RefSeq Size:	3567
RefSeq ORF:	975
Synonyms:	IRF-1; MAR
Locus ID:	3659



[View online »](#)

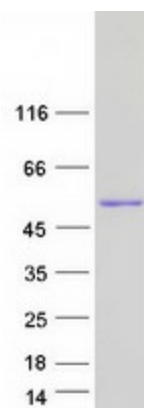
UniProt ID: [P10914](#), [Q6FHN8](#)

Cytogenetics: 5q31.1

Summary: The protein encoded by this gene is a transcriptional regulator and tumor suppressor, serving as an activator of genes involved in both innate and acquired immune responses. The encoded protein activates the transcription of genes involved in the body's response to viruses and bacteria, playing a role in cell proliferation, apoptosis, the immune response, and DNA damage response. This protein represses the transcription of several other genes. As a tumor suppressor, it both suppresses tumor cell growth and stimulates an immune response against tumor cells. Defects in this gene have been associated with gastric cancer, myelogenous leukemia, and lung cancer. [provided by RefSeq, Aug 2017]

Protein Families: Druggable Genome, Transcription Factors

Product images:



Coomassie blue staining of purified IRF1 protein (Cat# [TP303500]). The protein was produced from HEK293T cells transfected with IRF1 cDNA clone (Cat# [RC203500]) using MegaTran 2.0 (Cat# [TT210002]).