

## Product datasheet for PH303496

### D4 (ARHGDI) (NM\_001175) Human Mass Spec Standard

#### Product data:

Product Type:	Mass Spec Standards
Description:	ARHGDI MS Standard C13 and N15-labeled recombinant protein (NP_001166)
Species:	Human
Expression Host:	HEK293
Expression cDNA Clone or AA Sequence:	RC203496
Predicted MW:	23 kDa
Protein Sequence:	>RC203496 protein sequence Red=Cloning site Green=Tags(s)  MTEKAPEPHVEEDDDDELDSKLNYPKPPQKSLKELQEMDKDESILIKYKKTLLGDPVVTDPKAPNVVVT RLTLVCE SAPGPITMDLTGDL EALKKETIVLKEGSEYRVKIHFKVNRDIVSGLKYVQHTYRTGVKVDKAT FMVGSYGRPEEYFLTPVEEAPKGM LARGTYHNKSF FTDDDKQDHL SWEWNLSIKKEWTE  TRTRPLEQKLISEEDLAANDILDYKDDDDKV
Tag:	C-Myc/DDK
Purity:	> 80% as determined by SDS-PAGE and Coomassie blue staining
Concentration:	>0.05 µg/µL as determined by microplate BCA method
Labeling Method:	Labeled with [U- <sup>13</sup> C <sub>6</sub> , <sup>15</sup> N <sub>4</sub> ]-L-Arginine and [U- <sup>13</sup> C <sub>6</sub> , <sup>15</sup> N <sub>2</sub> ]-L-Lysine
Buffer:	25 mM Tris-HCl, 100 mM glycine, pH 7.3
Storage:	Store at -80°C. Avoid repeated freeze-thaw cycles.
Stability:	Stable for 3 months from receipt of products under proper storage and handling conditions.
RefSeq:	<a href="#">NP_001166</a>
RefSeq Size:	1216
RefSeq ORF:	603
Synonyms:	D4; GDIA2; GDID4; Ly-GDI; LYGDI; RAP1GN1; RhoGDI2
Locus ID:	397
UniProt ID:	<a href="#">P52566</a> , <a href="#">A0A024RAS5</a>



[View online »](#)

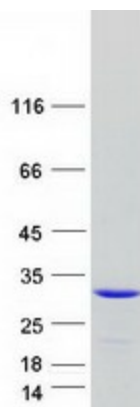
**Cytogenetics:** 12p12.3

**Summary:** Members of the Rho (or ARH) protein family (see MIM 165390) and other Ras-related small GTP-binding proteins (see MIM 179520) are involved in diverse cellular events, including cell signaling, proliferation, cytoskeletal organization, and secretion. The GTP-binding proteins are active only in the GTP-bound state. At least 3 classes of proteins tightly regulate cycling between the GTP-bound and GDP-bound states: GTPase-activating proteins (GAPs), guanine nucleotide-releasing factors (GRFs), and GDP-dissociation inhibitors (GDIs). The GDIs, including ARHGDIB, decrease the rate of GDP dissociation from Ras-like GTPases (summary by Scherle et al., 1993 [PubMed 8356058]).[supplied by OMIM, Dec 2010]

**Protein Families:** Druggable Genome

**Protein Pathways:** Neurotrophin signaling pathway

**Product images:**



Coomassie blue staining of purified ARHGDIB protein (Cat# [TP303496]). The protein was produced from HEK293T cells transfected with ARHGDIB cDNA clone (Cat# [RC203496]) using MegaTran 2.0 (Cat# [TT210002]).