

## Product datasheet for PH303487

### ENTPD6 (NM\_001247) Human Mass Spec Standard

#### Product data:

Product Type:	Mass Spec Standards
Description:	ENTPD6 MS Standard C13 and N15-labeled recombinant protein (NP_001238)
Species:	Human
Expression Host:	HEK293
Expression cDNA Clone or AA Sequence:	RC203487
Predicted MW:	53.1 kDa
Protein Sequence:	>RC203487 protein sequence Red=Cloning site Green=Tags(s)

MKKGIRYETSRKTSYIFQPQHGPWQTRMRKISNHGSLRVAKVAYPLGLCVGVFIYVAYIKWHRATATQAF  
FSITRAAPGARWQQAHSP LGTAADGHEVFYGI MFDAGSTGTRVHVFQFTRPPRETPTLTHETFKALKPG  
LSAYADDVEKSAQGIRELLDVAKQDIPDFWKATPLVLKATAGLRLLPGEKAQKLLQKVKEVFKASPFLV  
GDDCVSIMNGTDEGVS AWITINFLTGSLKTPGGSSVGM LDLGGGSTQIAFLPRVEGTLQASPPGYLTALR  
MFNRTYKLYSYSYLG LGLMSARLA I LGGVEGQPAKDGKELVSPCLSPSFKGEWEHA EVT YRVS GQKAAAS  
LHELCAARVSEVLQNRVHRT EEVKHVDFYAFSYYDLAAGVGLIDAEKGGSLVVGDFEIAAKYVCRTLET  
QPQSSPFS CMDLTYVSLLLQEF G FPRSKVLK LTRKIDNVETSWALGAI FHYIDSLNRQKSPAS

SGPTRTRPLEQKLI SEEDLAANDILDYKDDDDKV

Tag:	C-Myc/DDK
Purity:	> 80% as determined by SDS-PAGE and Coomassie blue staining
Concentration:	>0.05 µg/µL as determined by microplate BCA method
Labeling Method:	Labeled with [U- <sup>13</sup> C <sub>6</sub> , <sup>15</sup> N <sub>4</sub> ]-L-Arginine and [U- <sup>13</sup> C <sub>6</sub> , <sup>15</sup> N <sub>2</sub> ]-L-Lysine
Buffer:	25 mM Tris-HCl, 100 mM glycine, pH 7.3
Storage:	Store at -80°C. Avoid repeated freeze-thaw cycles.
Stability:	Stable for 3 months from receipt of products under proper storage and handling conditions.
RefSeq:	<u>NP_001238</u>
RefSeq Size:	2787
RefSeq ORF:	2118
Synonyms:	CD39L2; dj738P15.3; IL-6SAG; IL6ST2; NTPDase-6



[View online »](#)

Locus ID: 955

UniProt ID: [O75354](#)

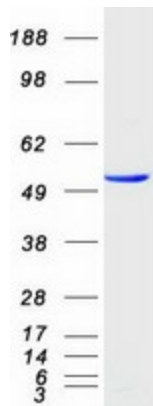
Cytogenetics: 20p11.21

**Summary:** ENTPD6 is similar to E-type nucleotidases (NTPases). NTPases, such as CD39, mediate catabolism of extracellular nucleotides. ENTPD6 contains 4 apyrase-conserved regions which are characteristic of NTPases. Alternative splicing results in multiple transcript variants encoding different isoforms. [provided by RefSeq, Dec 2015]

**Protein Families:** Secreted Protein, Transmembrane

**Protein Pathways:** Purine metabolism, Pyrimidine metabolism

### Product images:



Coomassie blue staining of purified ENTPD6 protein (Cat# [TP303487]). The protein was produced from HEK293T cells transfected with ENTPD6 cDNA clone (Cat# [RC203487]) using MegaTran 2.0 (Cat# [TT210002]).