

## Product datasheet for PH303486

### POLR1C (NM\_203290) Human Mass Spec Standard

#### Product data:

Product Type:	Mass Spec Standards
Description:	POLR1C MS Standard C13 and N15-labeled recombinant protein (NP_976035)
Species:	Human
Expression Host:	HEK293
Expression cDNA Clone or AA Sequence:	RC203486
Predicted MW:	39.2 kDa
Protein Sequence:	>RC203486 protein sequence Red=Cloning site Green=Tags(s)

MAASQAVEEMRSRVVLGEFGVRNVHTTDFPGNYSYDDAWDQDRFEKNFRVDVVHMDENSLEFDMVGIDA  
AIANAFRRILLAEVPTMAVEKVLVYNNTSIVQDEILAHRLGLIPIHADPRLFYRNQGDDEGTEIDTLQF  
RLQVRCTRNPAAKDSSDPNELVNHKVVYTRHMTWIPLGNQADLFPEGTIRPVHDDILIAQLRPGQEIDL  
LMHCVKGIGKDHAKFSPVATASYRLLPDITLLEPVEGEAAEELSRCFSPGVIEVQEVQGGKVARVANPRL  
DTFSREIFRNEKLLKVVRLARVRDHYIFSVESTGVLPPDVLVSEAIKVLGKCRRLDELDAVQMD

TRTRPLEQKLISEEDLAANDILDYKDDDDKV

Tag:	C-Myc/DDK
Purity:	> 80% as determined by SDS-PAGE and Coomassie blue staining
Concentration:	>0.05 µg/µL as determined by microplate BCA method
Labeling Method:	Labeled with [U- <sup>13</sup> C <sub>6</sub> , <sup>15</sup> N <sub>4</sub> ]-L-Arginine and [U- <sup>13</sup> C <sub>6</sub> , <sup>15</sup> N <sub>2</sub> ]-L-Lysine
Buffer:	25 mM Tris-HCl, 100 mM glycine, pH 7.3
Storage:	Store at -80°C. Avoid repeated freeze-thaw cycles.
Stability:	Stable for 3 months from receipt of products under proper storage and handling conditions.
RefSeq:	<u><a href="#">NP_976035</a></u>
RefSeq Size:	1353
RefSeq ORF:	1038
Synonyms:	AC40; HLD11; RPA5; RPA39; RPA40; RPAC1; RPC40; TCS3
Locus ID:	9533



[View online »](#)

UniProt ID: [O15160](#)

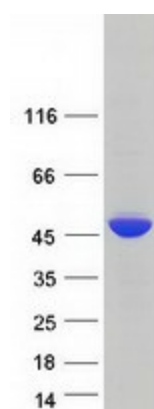
Cytogenetics: 6p21.1

**Summary:** The protein encoded by this gene is a subunit of both RNA polymerase I and RNA polymerase III complexes. The encoded protein is part of the Pol core element. Mutations in this gene have been associated with Treacher Collins syndrome (TCS) and hypomyelinating leukodystrophy 11. Alternative splicing results in multiple transcript variants. [provided by RefSeq, Jan 2016]

**Protein Families:** Druggable Genome, Stem cell - Pluripotency, Transcription Factors

**Protein Pathways:** Cytosolic DNA-sensing pathway, Metabolic pathways, Purine metabolism, Pyrimidine metabolism, RNA polymerase

### Product images:



Coomassie blue staining of purified POLR1C protein (Cat# [TP303486]). The protein was produced from HEK293T cells transfected with POLR1C cDNA clone (Cat# [RC203486]) using MegaTran 2.0 (Cat# [TT210002]).