

Product datasheet for PH303483

CDC42EP1 (NM_007061) Human Mass Spec Standard

Product data:

Product Type:	Mass Spec Standards
Description:	CDC42EP1 MS Standard C13 and N15-labeled recombinant protein (NP_008992)
Species:	Human
Expression Host:	HEK293
Expression cDNA Clone or AA Sequence:	RC203483
Predicted MW:	39.7 kDa
Protein Sequence:	>RC203483 protein sequence Red=Cloning site Green=Tags(s)

MPGPQGGGAATMSLGKLSVGVWVSSSQKRRLTADMISHPLGDFRHTMHVGRGGDVFGDTSFLSNHGGSSGSTRSPRSFLAKKLQLVRRVGAPRRMASPPAPSPAPPAISPIIKNAISLPQLNQAAYDSL VVGKLSFDSSPTSSTDGHSYGLDSGFCTISRLPRSEKPHDRDRDGSFPSEPLRRSDSLLSFRLDLDLGPSLLSEL LGVMSLPEAPAAETPAPAANPPAPTANPTGPAANPPATTANPPAPAATPTGPAANPPAPAAASSTPHGHCP NGVTAGLGPVAEVKSSPVGGGPRGPAGPALGRHWGAGWDGGHHYPEMDARQERVEVLPQARASWESLDEE WRAPQAGSRTPVPSTVQANTFEFADAEEDEVKV

TRTRPLEQKLI SEEDLAANDILDYKDDDDKV

Tag:	C-Myc/DDK
Purity:	> 80% as determined by SDS-PAGE and Coomassie blue staining
Concentration:	>0.05 µg/µL as determined by microplate BCA method
Labeling Method:	Labeled with [U- ¹³ C ₆ , ¹⁵ N ₄]-L-Arginine and [U- ¹³ C ₆ , ¹⁵ N ₂]-L-Lysine
Buffer:	25 mM Tris-HCl, 100 mM glycine, pH 7.3
Storage:	Store at -80°C. Avoid repeated freeze-thaw cycles.
Stability:	Stable for 3 months from receipt of products under proper storage and handling conditions.
RefSeq:	<u>NP_008992</u>
RefSeq Size:	2182
RefSeq ORF:	1152



[View online »](#)

Synonyms: 55 kDa bone marrow stromal/endothelial cell protein; BORG5; CDC42 effector protein (Rho GTPase binding) 1; CDC42 effector protein 1; CEP1; CEP1, BORG5, MSE55, MGC15316; MGC15316; MSE55; OTTHUMP00000028709; serum constituent protein

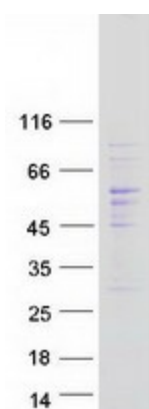
Locus ID: 11135

UniProt ID: [Q00587](#)

Cytogenetics: 22q13.1

Summary: CDC42 is a member of the Rho GTPase family that regulates multiple cellular activities, including actin polymerization. The protein encoded by this gene is a CDC42 binding protein that mediates actin cytoskeleton reorganization at the plasma membrane. This protein is secreted and is primarily found in bone marrow. [provided by RefSeq, Jul 2008]

Product images:



Coomassie blue staining of purified CDC42EP1 protein (Cat# [TP303483]). The protein was produced from HEK293T cells transfected with CDC42EP1 cDNA clone (Cat# [RC203483]) using MegaTran 2.0 (Cat# [TT210002]).