

Product datasheet for PH303478

FHL1 (NM_001449) Human Mass Spec Standard

Product data:

Product Type:	Mass Spec Standards
Description:	FHL1 MS Standard C13 and N15-labeled recombinant protein (NP_001440)
Species:	Human
Expression Host:	HEK293
Expression cDNA Clone or AA Sequence:	RC203478
Predicted MW:	31.7 kDa
Protein Sequence:	>RC203478 representing NM_001449 Red=Cloning site Green=Tags(s) MAEKFDCHYCRDPLQGKKYVQKDGHCCLKCFDKFCANTCVECRKPIGADSKEVHYKNRFWHDTCFRCAK CLHPLANETFVAKDNKILCNKCTTREDSPKCKGCFKAIVAGDQNVVEYKGTVWHKDCFTCSNCKQVIGTGS FFPKGEDFYCVTCHETKFAKHCVKCNKAITSGGITYQDQPWHADCFVCVTCSSKLAGQRFTAVEDQYYCV DCYKNFVAKKAGCKNPITGFGKSSVAYEGQSWHDYCFHCKKCSVNLANKRFVHFHQEYVYCPDCAKKL TRTRPLEQKLI SEEDLAANDILDYKDDDDKV
Tag:	C-Myc/DDK
Purity:	> 80% as determined by SDS-PAGE and Coomassie blue staining
Concentration:	>0.05 µg/µL as determined by microplate BCA method
Labeling Method:	Labeled with [U- ¹³ C ₆ , ¹⁵ N ₄]-L-Arginine and [U- ¹³ C ₆ , ¹⁵ N ₂]-L-Lysine
Buffer:	25 mM Tris-HCl, 100 mM glycine, pH 7.3
Storage:	Store at -80°C. Avoid repeated freeze-thaw cycles.
Stability:	Stable for 3 months from receipt of products under proper storage and handling conditions.
RefSeq:	NP_001440
RefSeq Size:	2398
RefSeq ORF:	840
Synonyms:	FCMSU; FHL-1; FHL1A; FHL1B; FLH1A; KYOT; RBMX1A; RBMX1B; SLIM; SLIM-1; SLIM1; SLIMMER; XMPMA
Locus ID:	2273



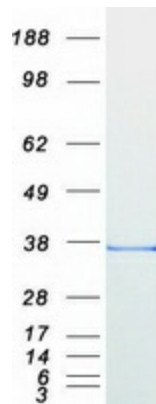
[View online »](#)

UniProt ID: [Q13642](#)

Cytogenetics: Xq26.3

Summary: This gene encodes a member of the four-and-a-half-LIM-only protein family. Family members contain two highly conserved, tandemly arranged, zinc finger domains with four highly conserved cysteines binding a zinc atom in each zinc finger. Expression of these family members occurs in a cell- and tissue-specific mode and these proteins are involved in many cellular processes. Mutations in this gene have been found in patients with Emery-Dreifuss muscular dystrophy. Multiple alternately spliced transcript variants which encode different protein isoforms have been described.[provided by RefSeq, Nov 2009]

Product images:



Coomassie blue staining of purified FHL1 protein (Cat# [TP303478]). The protein was produced from HEK293T cells transfected with FHL1 cDNA clone (Cat# [RC203478]) using MegaTran 2.0 (Cat# [TT210002]).