

## Product datasheet for PH303455

### PICK1 (NM\_001039584) Human Mass Spec Standard

#### Product data:

Product Type:	Mass Spec Standards
Description:	PICK1 MS Standard C13 and N15-labeled recombinant protein (NP_001034673)
Species:	Human
Expression Host:	HEK293
Expression cDNA Clone or AA Sequence:	RC203455
Predicted MW:	46.6 kDa
Protein Sequence:	>RC203455 protein sequence Red=Cloning site Green=Tags(s)
	MFADLDYDIEEDKLGIPVPGKVTLQKDAQNLIGISIGGGAQYCPLYIVQVFDNTPAALDGTVAAGDEI TGVNGRSIKGKTKVEVAKMIQEYKGEVTIHYNKLQADPKQGMSLDIVLKKVKHRLVENMSSGTADALGLS RAILCNDGLVKRLEELERTAELYKGMTEHTKNLLRAFYELSQTHRAFGDVF SVIGVREPQPAASEAFVKF ADAHRSIEKFGIRLLKTIKPLTDLNLYLNKAIPDTRLTIKKYLDVKFEYLSYCLKVKEMDDEEYSICAL GEPLYRVSTGNYEYRLILRCRQEARARFSQMRKDVLEKMELLDQKHVQDIVFQLQRLVSTMSKYYNDCYA VLRDADVFPIEVDLAHTTLAYGLNQEEFTDGEEEEEEDTAAGEPSRDTRGAAGPLDKGGSWCDS
	TRTRPLEQKLI SEEDLAANDILDYKDDDDKV
Tag:	C-Myc/DDK
Purity:	> 80% as determined by SDS-PAGE and Coomassie blue staining
Concentration:	>0.05 µg/µL as determined by microplate BCA method
Labeling Method:	Labeled with [U- <sup>13</sup> C <sub>6</sub> , <sup>15</sup> N <sub>4</sub> ]-L-Arginine and [U- <sup>13</sup> C <sub>6</sub> , <sup>15</sup> N <sub>2</sub> ]-L-Lysine
Buffer:	25 mM Tris-HCl, 100 mM glycine, pH 7.3
Storage:	Store at -80°C. Avoid repeated freeze-thaw cycles.
Stability:	Stable for 3 months from receipt of products under proper storage and handling conditions.
RefSeq:	<u><a href="#">NP_001034673</a></u>
RefSeq Size:	2073
RefSeq ORF:	1245
Synonyms:	PICK; PRKCABP
Locus ID:	9463



[View online »](#)

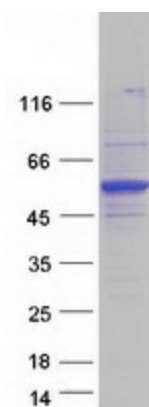
UniProt ID: [Q9NRD5](#), [A0A024R1J5](#)

Cytogenetics: 22q13.1

**Summary:** The protein encoded by this gene contains a PDZ domain, through which it interacts with protein kinase C, alpha (PRKCA). This protein may function as an adaptor that binds to and organizes the subcellular localization of a variety of membrane proteins. It has been shown to interact with multiple glutamate receptor subtypes, monoamine plasma membrane transporters, as well as non-voltage gated sodium channels, and may target PRKCA to these membrane proteins and thus regulate their distribution and function. This protein has also been found to act as an anchoring protein that specifically targets PRKCA to mitochondria in a ligand-specific manner. Three transcript variants encoding the same protein have been found for this gene. [provided by RefSeq, Jul 2008]

**Protein Families:** Druggable Genome

### Product images:



Coomassie blue staining of purified PICK1 protein (Cat# [TP303455]). The protein was produced from HEK293T cells transfected with PICK1 cDNA clone (Cat# [RC203455]) using MegaTran 2.0 (Cat# [TT210002]).