

Product datasheet for PH303452

ISYNA1 (NM_016368) Human Mass Spec Standard

Product data:

Product Type:	Mass Spec Standards
Description:	ISYNA1 MS Standard C13 and N15-labeled recombinant protein (NP_057452)
Species:	Human
Expression Host:	HEK293
Expression cDNA Clone or AA Sequence:	RC203452
Predicted MW:	61.1 kDa
Protein Sequence:	>RC203452 protein sequence Red=Cloning site Green=Tags(s)

MEAAAQFFVESPDVVYGPPEAIEAQYEYRTRVSREGGVLKVHPTSTRFTFRTARQVPRLGVMLVGWGGNN
GSTLTAAVLANRLRLSWPTRSGRKEANYGSLTQAGTVSLGLDAEGQEVFVPFSAVLPMPVAPNDLVFDGW
DISSLNLAEMRRRAKVLWDWGLQEQLWPHMEALRPRPSVYIPEFIAANQSARADNLIPGSRAQQLQIRRD
IRDFRSSAGLDKVIWLWTANTERFCEVIPGLNDAENLLRTIELGLEVSPSTLFAVASILEGCAFLNGSP
QNTLVPGALELAWQHRVAVGGDDFKSGQTKVKSVLVDFLIGSGLKTMISVSYNHLGNNDGENLSAPLQFR
SKEVSKSNVDDMVQSNPVLVYTPGEEPDCVVIKYPVYVGDGSKRALDEYTSMLGGTNTLVLHNTCEDS
LLAAPIMLDLALLTELCQRVSFCTDMDPEPQTFHPVLSLLSFLFKAPLVPPGSPVVALFRQRSCIENIL
RACVGLPPQNHMLLEHKMERPGPSLKRVPVAATYPMLNKKGPVPAATNGCTGDANGHLQEPPMPTT

TRTRPLEQKLISEEDLAANDILDYKDDDDKV

Tag:	C-Myc/DDK
Purity:	> 80% as determined by SDS-PAGE and Coomassie blue staining
Concentration:	>0.05 µg/µL as determined by microplate BCA method
Labeling Method:	Labeled with [U- ¹³ C ₆ , ¹⁵ N ₄]-L-Arginine and [U- ¹³ C ₆ , ¹⁵ N ₂]-L-Lysine
Buffer:	25 mM Tris-HCl, 100 mM glycine, pH 7.3
Storage:	Store at -80°C. Avoid repeated freeze-thaw cycles.
Stability:	Stable for 3 months from receipt of products under proper storage and handling conditions.
RefSeq:	<u>NP_057452</u>
RefSeq Size:	2427
RefSeq ORF:	1674



[View online »](#)

Synonyms: INO1; INOS; IPS; IPS-1; IPS 1

Locus ID: 51477

UniProt ID: [Q9NPH2](#), [A0A140VK73](#)

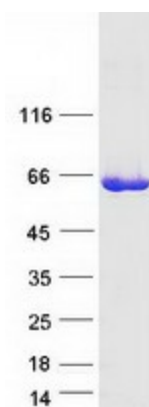
Cytogenetics: 19p13.11

Summary: This gene encodes an inositol-3-phosphate synthase enzyme. The encoded protein plays a critical role in the myo-inositol biosynthesis pathway by catalyzing the rate-limiting conversion of glucose 6-phosphate to myo-inositol 1-phosphate. Alternatively spliced transcript variants encoding multiple isoforms have been observed for this gene, and a pseudogene of this gene is located on the short arm of chromosome 4. [provided by RefSeq, Nov 2011]

Protein Families: Druggable Genome

Protein Pathways: Inositol phosphate metabolism, Metabolic pathways

Product images:



Coomassie blue staining of purified ISYNA1 protein (Cat# [TP303452]). The protein was produced from HEK293T cells transfected with ISYNA1 cDNA clone (Cat# [RC203452]) using MegaTran 2.0 (Cat# [TT210002]).