

## Product datasheet for PH303449

### RMC1 (NM\_013326) Human Mass Spec Standard

#### Product data:

Product Type:	Mass Spec Standards
Description:	C18orf8 MS Standard C13 and N15-labeled recombinant protein (NP_037458)
Species:	Human
Expression Host:	HEK293
Expression cDNA Clone or AA Sequence:	RC203449
Predicted MW:	75 kDa
Protein Sequence:	>RC203449 protein sequence Red=Cloning site Green=Tags(s)

MGEEDYYLELCERPVQFEKANPVCVFFDEANKQVFAVRSGGATGVVVKGPDDRNPISFRMDDKGEVKCI  
KFSLENKILAVQRTSKTVDFCNFIPDNSQLEYTQECKTKNANILGFCWTSSTEIVFITDQGIEFYQVLPE  
KRSLKLLKSHNLNVNWMYCPESAVILLSTTVLENLQPFHFAGTMSKLPKFEIELPAAPKSTKPSLSE  
RDIAMATIYGQLYVFLRHRSRTSNSTGAEVVL YHLPREGACKMHILKLNRTGKFALNVVDNLVVVHHQ  
DTETSVIFDIKLRGEFDGVSFTFHPVLPARSIQPYQIPITGPAAVTSQSPVPCKLYSSSWIVFQPDIIIS  
ASQGYLWNLQVKLEPIVNL L PDKGRLMDFLLQRKECKMVL SVCSQMLSESDRASLPVIATVFDKLNHEY  
KKYLDAEQSYAMAVEAGQSRSSPLLKRPVRTQAVLDQSDVYTHVL SAFVEKKEMPHKFVIAVLM EYIRSL  
NQFQIAVQH YLHELVIKTLVQHNL FYMLHQFLQYHVLSDSKPLACLLLSLESFYPPAHL SLDMLKRLST  
ANDEIVEVLLSKHQVLAALRFIRGIGGHDNISARKFLDAAKQTEDNMLFYTIIFRFFEQRNQR LRGSPNFT  
PGEHCEEHVAFKQIFGDQALMRPTTF

TRTRPLEQKLI SEEDLAANDILDYKDDDDKV

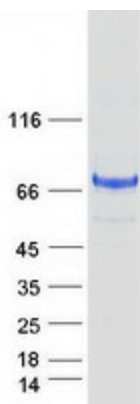
Tag:	C-Myc/DDK
Purity:	> 80% as determined by SDS-PAGE and Coomassie blue staining
Concentration:	>0.05 µg/µL as determined by microplate BCA method
Labeling Method:	Labeled with [U- 13C6, 15N4]-L-Arginine and [U- 13C6, 15N2]-L-Lysine
Buffer:	25 mM Tris-HCl, 100 mM glycine, pH 7.3
Storage:	Store at -80°C. Avoid repeated freeze-thaw cycles.
Stability:	Stable for 3 months from receipt of products under proper storage and handling conditions.
RefSeq:	<a href="#">NP_037458</a>
RefSeq Size:	2226



[View online »](#)

RefSeq ORF:	1971
Synonyms:	C18orf8; HsT2591; Mic-1; MIC1; WDR98
Locus ID:	29919
UniProt ID:	<a href="#">Q96DM3</a> , <a href="#">B7Z201</a>
Cytogenetics:	18q11.2
Summary:	This gene encodes a colon cancer associated protein. [provided by RefSeq, Jan 2013]

### Product images:



Coomassie blue staining of purified RMC1 protein (Cat# [TP303449]). The protein was produced from HEK293T cells transfected with RMC1 cDNA clone (Cat# [RC203449]) using MegaTran 2.0 (Cat# [TT210002]).