

## Product datasheet for PH303428

### BRMS1 (NM\_015399) Human Mass Spec Standard

#### Product data:

Product Type:	Mass Spec Standards
Description:	BRMS1 MS Standard C13 and N15-labeled recombinant protein (NP_056214)
Species:	Human
Expression Host:	HEK293
Expression cDNA Clone or AA Sequence:	RC203428
Predicted MW:	28.5 kDa
Protein Sequence:	>RC203428 protein sequence Red=Cloning site Green=Tags(s)  MPVQPPSKDTEEMEAEGDSAAEMNGEEEESEEERSGSQTESEESSEMDDDEDYERRRSECVSEMLDLEKQ FSELKKEKLFRRERLSQLRLRLEEVGAEAPEYTEPLGGLQRSLKIRIQVAGIYKGFCLDVIRNKYECQLQG AKQHLESEKLLL YDTLQGELQERIQRLEEDRQSLDL SSEWDDKLHARGSSRSWDSLPPSKRKKAPLVSG PYIVYMLQEIDILEDWTAIKKARAAVSPQKRKSDGP  TRTRPLEQKLI SEEDLAANDILDYKDDDDKV
Tag:	C-Myc/DDK
Purity:	> 80% as determined by SDS-PAGE and Coomassie blue staining
Concentration:	>0.05 µg/µL as determined by microplate BCA method
Labeling Method:	Labeled with [U- <sup>13</sup> C <sub>6</sub> , <sup>15</sup> N <sub>4</sub> ]-L-Arginine and [U- <sup>13</sup> C <sub>6</sub> , <sup>15</sup> N <sub>2</sub> ]-L-Lysine
Buffer:	25 mM Tris-HCl, 100 mM glycine, pH 7.3
Storage:	Store at -80°C. Avoid repeated freeze-thaw cycles.
Stability:	Stable for 3 months from receipt of products under proper storage and handling conditions.
RefSeq:	<a href="#">NP_056214</a>
RefSeq Size:	1455
RefSeq ORF:	738
Locus ID:	25855
UniProt ID:	<a href="#">Q9HCU9</a>
Cytogenetics:	11q13.2



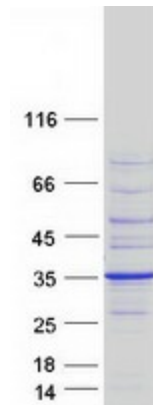
[View online »](#)

**Summary:**

This gene reduces the metastatic potential, but not the tumorigenicity, of human breast cancer and melanoma cell lines. The protein encoded by this gene localizes primarily to the nucleus and is a component of the mSin3a family of histone deacetylase complexes (HDAC). The protein contains two coiled-coil motifs and several imperfect leucine zipper motifs. Alternative splicing results in two transcript variants encoding different isoforms. [provided by RefSeq, Jul 2008]

**Protein Families:**

Druggable Genome

**Product images:**

Coomassie blue staining of purified BRMS1 protein (Cat# [TP303428]). The protein was produced from HEK293T cells transfected with BRMS1 cDNA clone (Cat# [RC203428]) using MegaTran 2.0 (Cat# [TT210002]).