

## Product datasheet for PH303420

### Tuftelin 1 (TUFT1) (NM\_020127) Human Mass Spec Standard

#### Product data:

Product Type:	Mass Spec Standards
Description:	TUFT1 MS Standard C13 and N15-labeled recombinant protein (NP_064512)
Species:	Human
Expression Host:	HEK293
Expression cDNA Clone or AA Sequence:	RC203420
Predicted MW:	44.3 kDa
Protein Sequence:	>RC203420 protein sequence Red=Cloning site Green=Tags(s)

MNGTRNWCTLVDVHPEDQAAGSVDILRLTLQGELTGDELEHIAQKAGRKTYAMVSSHAGHSLASELVES  
HDGHEEIIKVYLKGRSGDKMIHEKNINQLKSEVQYIQEARNCLQKLREDISSKLDRLGDSLHRQEIQVV  
LEKPNGFSQSPTALYSSPPEVDTTCINEDVESLRKTVQDLLAKLQEAQRHQSDCVAFEVTLSTRYQREAEQ  
SNVALQREEDRVEQKEAEVQELQRLLGMETE HQALLAKVREGEVALEELRSNNADCQAEREKAATLEKE  
VAGLREKIHLLDMLKSQQRKVRQMIEQLQNSKAVIQSKDATIQELKEKIAYLEAENLEMHDRMEHLIEK  
QISHGNFSTQARAKTENPGSIRISKPPSPKMPVIRRVET

TRTRPLEQKLISEEDLAANDILDYKDDDDKV

Tag:	C-Myc/DDK
Purity:	> 80% as determined by SDS-PAGE and Coomassie blue staining
Concentration:	>0.05 µg/µL as determined by microplate BCA method
Labeling Method:	Labeled with [U- <sup>13</sup> C <sub>6</sub> , <sup>15</sup> N <sub>4</sub> ]-L-Arginine and [U- <sup>13</sup> C <sub>6</sub> , <sup>15</sup> N <sub>2</sub> ]-L-Lysine
Buffer:	25 mM Tris-HCl, 100 mM glycine, pH 7.3
Storage:	Store at -80°C. Avoid repeated freeze-thaw cycles.
Stability:	Stable for 3 months from receipt of products under proper storage and handling conditions.
RefSeq:	<u>NP_064512</u>
RefSeq Size:	3127
RefSeq ORF:	1170
Locus ID:	7286
UniProt ID:	<u>Q9NNX1</u>



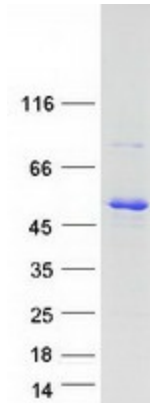
[View online »](#)

Cytogenetics: 1q21.3

**Summary:** Tuftelin is an acidic protein that is thought to play a role in dental enamel mineralization and is implicated in caries susceptibility. It is also thought to be involved with adaptation to hypoxia, mesenchymal stem cell function, and neurotrophin nerve growth factor mediated neuronal differentiation. [provided by RefSeq, Aug 2014]

**Protein Families:** Secreted Protein

**Product images:**



Coomassie blue staining of purified TUFT1 protein (Cat# [TP303420]). The protein was produced from HEK293T cells transfected with TUFT1 cDNA clone (Cat# [RC203420]) using MegaTran 2.0 (Cat# [TT210002]).