

## Product datasheet for PH303412

### RPL13 (NM\_033251) Human Mass Spec Standard

#### Product data:

Product Type:	Mass Spec Standards
Description:	RPL13 MS Standard C13 and N15-labeled recombinant protein (NP_150254)
Species:	Human
Expression Host:	HEK293
Expression cDNA Clone or AA Sequence:	RC203412
Predicted MW:	24.3 kDa
Protein Sequence:	>RC203412 protein sequence Red=Cloning site Green=Tags(s)  MAPSRNGMVLKPHFKDWQRRVATWFNQPKIRRRKARQAKARRIAPRPASGPIRPIVRCPTVRYHTKV RAGRGFSLEELRVAGIHKKVARTIGISVDPRRRNKSTESLQANVQRLKEYRSKLILFPRKPSAPKKGDS AEELKLATQLTGPVMPVRNVYKKEKARVITEEEKNFKAFASLRMARANARLFGIRAKRAKEAAEQDVEKK K  TRTRPLEQKLI SEEDLAANDILDYKDDDDKV
Tag:	C-Myc/DDK
Purity:	> 80% as determined by SDS-PAGE and Coomassie blue staining
Concentration:	>0.05 µg/µL as determined by microplate BCA method
Labeling Method:	Labeled with [U- <sup>13</sup> C <sub>6</sub> , <sup>15</sup> N <sub>4</sub> ]-L-Arginine and [U- <sup>13</sup> C <sub>6</sub> , <sup>15</sup> N <sub>2</sub> ]-L-Lysine
Buffer:	25 mM Tris-HCl, 100 mM glycine, pH 7.3
Storage:	Store at -80°C. Avoid repeated freeze-thaw cycles.
Stability:	Stable for 3 months from receipt of products under proper storage and handling conditions.
RefSeq:	<a href="#">NP_150254</a>
RefSeq Size:	4672
RefSeq ORF:	633
Synonyms:	BBC1; D16S44E; D16S444E; L13; SEMDIST
Locus ID:	6137
UniProt ID:	<a href="#">P26373</a> , <a href="#">A8K4C8</a>



[View online »](#)

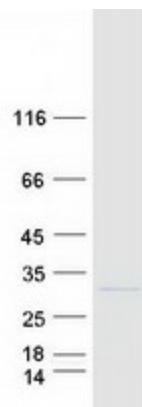
Cytogenetics: 17p11.2

**Summary:** Ribosomes, the organelles that catalyze protein synthesis, consist of a small 40S subunit and a large 60S subunit. Together these subunits are composed of 4 RNA species and approximately 80 structurally distinct proteins. This gene encodes a ribosomal protein that is a component of the 60S subunit. The protein belongs to the L13E family of ribosomal proteins. It is located in the cytoplasm. This gene is expressed at significantly higher levels in benign breast lesions than in breast carcinomas. Alternatively spliced transcript variants encoding distinct isoforms have been found for this gene. As is typical for genes encoding ribosomal proteins, there are multiple processed pseudogenes of this gene dispersed through the genome. [provided by RefSeq, Jul 2011]

**Protein Families:** Druggable Genome

**Protein Pathways:** Ribosome

### Product images:



Coomassie blue staining of purified RPL13 protein (Cat# [TP303412]). The protein was produced from HEK293T cells transfected with RPL13 cDNA clone (Cat# [RC203412]) using MegaTran 2.0 (Cat# [TT210002]).