

Product datasheet for PH303408

CTDSP1 (NM_182642) Human Mass Spec Standard

Product data:

Product Type:	Mass Spec Standards
Description:	CTDSP1 MS Standard C13 and N15-labeled recombinant protein (NP_872580)
Species:	Human
Expression Host:	HEK293
Expression cDNA Clone or AA Sequence:	RC203408
Predicted MW:	29.2 kDa
Protein Sequence:	>RC203408 protein sequence Red=Cloning site Green=Tags(s) MDSSAVITQISKEEARGPLRGKGDQKSAASQKPRSRGILHSLFCCVCRDDGEALPAHSGAPLLVEENGAI PKQTPVQYLLPEAKAQSDKICVVIDLDETLVHSSFKPVNNADFIIPVEIDGVVHQVYVVKRPHVDEFLQ RMGELFECVLFASLAKYADPVADLLDKWGAFRARLFRESCVFHRGNYVKDLSRLGRDLRRVLILDNSPA SYVFHPDNAVVASWFDNMSDTELHDLLPFPEQLSRVDDVYVSLRQPRPGS TRTRPLEQKLI SEEDLAANDILDYKDDDDKV
Tag:	C-Myc/DDK
Purity:	> 80% as determined by SDS-PAGE and Coomassie blue staining
Concentration:	>0.05 µg/µL as determined by microplate BCA method
Labeling Method:	Labeled with [U- 13C6, 15N4]-L-Arginine and [U- 13C6, 15N2]-L-Lysine
Buffer:	25 mM Tris-HCl, 100 mM glycine, pH 7.3
Storage:	Store at -80°C. Avoid repeated freeze-thaw cycles.
Stability:	Stable for 3 months from receipt of products under proper storage and handling conditions.
RefSeq:	NP_872580
RefSeq Size:	2652
RefSeq ORF:	783
Synonyms:	NIF3; NLI-IF; NLIIF; SCP1
Locus ID:	58190
UniProt ID:	Q9GZU7



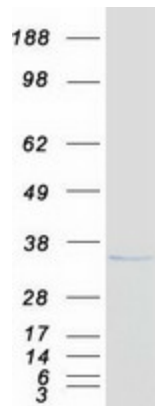
[View online »](#)

Cytogenetics: 2q35

Summary: This gene encodes a member of the small C-terminal domain phosphatase (SCP) family of nuclear phosphatases. These proteins play a role in transcriptional regulation through specific dephosphorylation of phosphoserine 5 within tandem heptapeptide repeats of the C-terminal domain of RNA polymerase II. The encoded protein plays a role in neuronal gene silencing in non-neuronal cells, and may also inhibit osteoblast differentiation. Alternatively spliced transcript variants encoding multiple isoforms have been observed for this gene. [provided by RefSeq, Oct 2011]

Protein Families: Phosphatase

Product images:



Coomassie blue staining of purified CTDSP1 protein (Cat# [TP303408]). The protein was produced from HEK293T cells transfected with CTDSP1 cDNA clone (Cat# [RC203408]) using MegaTran 2.0 (Cat# [TT210002]).