

## Product datasheet for PH303406

### DPP3 (NM\_130443) Human Mass Spec Standard

#### Product data:

Product Type:	Mass Spec Standards
Description:	DPP3 MS Standard C13 and N15-labeled recombinant protein (NP_569710)
Species:	Human
Expression Host:	HEK293
Expression cDNA Clone or AA Sequence:	RC203406
Predicted MW:	82.6 kDa
Protein Sequence:	>RC203406 protein sequence Red=Cloning site Green=Tags(s)

MADTQYILPNDIGVSSLDCREAFRLSPTERLYAYHLSRAAWYGGGLAVLLQTSPEAPYIYALLSRLFRAQ  
DPDQLRQHALLAEGLTEEEYQAFVLYAAGVYSNMGNYSFGDTKFPNLPKEKLERVILGSEAAQQHPPEEV  
RGLWQTCGELMFLEPRLRHLGLGKEGITYFSGNCTMEDAKLAQDFLDSQNL SAYNTRLFKEVDGEGKP  
YYEVRLASVLGSEPSLDSEVTSKLSYEFGRSPFQVTRGDYAPILQKVVEQLEKAKAYAANSHQGMMLAQ  
YIESFTQGSIEAHKGRSRFWIQDKGPIVESYIGFIESYRDPFGSRGEFEGFVAVVNMKAMSAKFERLVASA  
EQLLKELPWPPTFEKDKFLTPDF TSLDVLTFAGSGIPAGINIPNYDDLQTEGFKNVSLGNVLAVAYATQ  
REKLTFLLEDDKDYILWKGPSFDVQVGLHELLGHGSGKLFVQDEKGFNFDQETVINPETGEQIQSWYR  
SGETWDSKFSTIASSYEECRAESVGLYLCLHPQVLEIFGFEGADAEDVIYVNWLNVMVRAGLLALEFYTPE  
AFNWRQAHMQARFVILRVLLEAGEGLVITPTTGS DGRPDARVRLDRSKIRSVGKPALEFLRRLQVLKS  
TGDVAGGRALYEGYATVTDAPPECFLTLRDTVLLRKESRKLIVQPNTRLGSDVQLLEYEASAAGLIRSF  
SERFPEDGPELEEILTQLATADARFWKGPSEAPSGQA

TRTRPLEQKLISEEDLAANDILDYKDDDDKV

Tag:	C-Myc/DDK
Purity:	> 80% as determined by SDS-PAGE and Coomassie blue staining
Concentration:	50 ug/ml as determined by BCA
Labeling Method:	Labeled with [U- 13C6, 15N4]-L-Arginine and [U- 13C6, 15N2]-L-Lysine
Buffer:	100 mM glycine, 25 mM Tris-HCl, pH 7.3. Store at -80°C. Avoid repeated freeze-thaw cycles. Stable for 3 months from receipt of products under proper storage and handling conditions.
RefSeq:	<u><a href="#">NP_569710</a></u>
RefSeq Size:	3101
RefSeq ORF:	2211



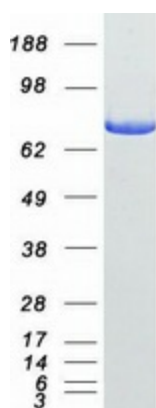
[View online >](#)

**Synonyms:** DPPIII  
**Locus ID:** 10072  
**UniProt ID:** [Q9NY33](#), [Q5JPB8](#)  
**Cytogenetics:** 11q13.2

**Summary:** This gene encodes a protein that is a member of the M49 family of metallopeptidases. This cytoplasmic protein binds a single zinc ion with its zinc-binding motif (HELLGH) and has post-proline dipeptidyl aminopeptidase activity, cleaving Xaa-Pro dipeptides from the N-termini of proteins. Increased activity of this protein is associated with endometrial and ovarian cancers. Alternatively spliced transcript variants have been found for this gene. [provided by RefSeq, Feb 2012]

**Protein Families:** Druggable Genome, Protease

### Product images:



Coomassie blue staining of purified DPP3 protein (Cat# [TP303406]). The protein was produced from HEK293T cells transfected with DPP3 cDNA clone (Cat# [RC203406]) using MegaTran 2.0 (Cat# [TT210002]).