

Product datasheet for PH303402

LASS4 (CERS4) (NM_024552) Human Mass Spec Standard

Product data:

Product Type:	Mass Spec Standards
Description:	LASS4 MS Standard C13 and N15-labeled recombinant protein (NP_078828)
Species:	Human
Expression Host:	HEK293
Expression cDNA Clone or AA Sequence:	RC203402
Predicted MW:	46.4 kDa
Protein Sequence:	>RC203402 protein sequence Red=Cloning site Green=Tags(s)
	<p>MLSSFNEFWQDRFWLPPNVTWTELEDGRVYPHPQDLLAALPLALVLLAMRLAFERFIGLPLSRWLGV RDQTRRQVKPNATLEKHFLTEGHRPKPEQLSLLAAQCGLTLQQTQRWFRRRRNQDRPQLTKKFCEASWRF LFYLSFFVGGLSVLYHESWLWAPVMCWDYRPNQTLKPSLYWWYLLLELGFYLSLLIRLPFDVKRKFKEQV IHFFVAVILMTFSYSANLLRIGSLVLLLHDSSDYLLLEACKMVNYMQYQQVCDALFLIFSFVFFYTRLVLF PTQILYTTYYESISNRGPFYGYFFNGLMLLQLLHVFSCLILRMLYSFMKKGQMEKDIRSDVEESDSS EEVAAAQEPLQLKNGAAGGPRPAPTDPQSRVAGRLTNRHTTAT</p> <p>TRTRPLEQKLI SEEDLAANDILDYKDDDDKV</p>
Tag:	C-Myc/DDK
Purity:	> 80% as determined by SDS-PAGE and Coomassie blue staining
Concentration:	>0.05 µg/µL as determined by microplate BCA method
Labeling Method:	Labeled with [U- ¹³ C ₆ , ¹⁵ N ₄]-L-Arginine and [U- ¹³ C ₆ , ¹⁵ N ₂]-L-Lysine
Buffer:	25 mM Tris-HCl, 100 mM glycine, pH 7.3
Storage:	Store at -80°C. Avoid repeated freeze-thaw cycles.
Stability:	Stable for 3 months from receipt of products under proper storage and handling conditions.
RefSeq:	NP_078828
RefSeq Size:	1817
RefSeq ORF:	1182
Synonyms:	LASS4; Trh1
Locus ID:	79603



[View online »](#)

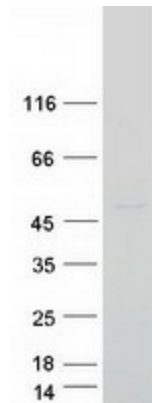
UniProt ID: [Q9HA82](#), [Q53HF9](#)

Cytogenetics: 19p13.2

Summary: May be either a bona fide (dihydro)ceramide synthase or a modulator of its activity. When overexpressed in cells is involved in the production of sphingolipids containing different fatty acid donors (N-linked stearyl- (C18) or arachidoyl- (C20) ceramides) in a fumonisin B1-independent manner (By similarity).[UniProtKB/Swiss-Prot Function]

Protein Families: Transcription Factors, Transmembrane

Product images:



Coomassie blue staining of purified CERS4 protein (Cat# [TP303402]). The protein was produced from HEK293T cells transfected with CERS4 cDNA clone (Cat# [RC203402]) using MegaTran 2.0 (Cat# [TT210002]).