

Product datasheet for PH303397

Lin28 (LIN28A) (NM_024674) Human Mass Spec Standard

Product data:

Product Type:	Mass Spec Standards
Description:	LIN28A MS Standard C13 and N15-labeled recombinant protein (NP_078950)
Species:	Human
Expression Host:	HEK293
Expression cDNA Clone or AA Sequence:	RC203397
Predicted MW:	22.7 kDa
Protein Sequence:	>RC203397 protein sequence Red=Cloning site Green=Tags(s) MGSVSNQQFAGGCAKAAEEAPEEAPEDAARAADPEQLLHGAGICKWFNVRMGFGFLSMTARAGVALDPPV DVFVHQSKLHMEGFRSLKEGEAVEFTFKKSAKGLSIRVTGPGGVFCIGSERRPKGKSMQKRRSKGDRCY NCGGLDHHAKECKLPPQPKKCHFCQSISHMVASCPLKAQQGPSAQQKPTYFREEEEEIHSPTLLPEAQN TRTRPLEQKLI SEEDLAANDILDYKDDDDKV
Tag:	C-Myc/DDK
Purity:	> 80% as determined by SDS-PAGE and Coomassie blue staining
Concentration:	>0.05 µg/µL as determined by microplate BCA method
Labeling Method:	Labeled with [U- 13C6, 15N4]-L-Arginine and [U- 13C6, 15N2]-L-Lysine
Buffer:	25 mM Tris-HCl, 100 mM glycine, pH 7.3
Storage:	Store at -80°C. Avoid repeated freeze-thaw cycles.
Stability:	Stable for 3 months from receipt of products under proper storage and handling conditions.
RefSeq:	NP_078950
RefSeq Size:	4014
RefSeq ORF:	627
Synonyms:	CSDD1; LIN-28; lin-28A; LIN28; ZCCHC1
Locus ID:	79727
UniProt ID:	Q9H9Z2



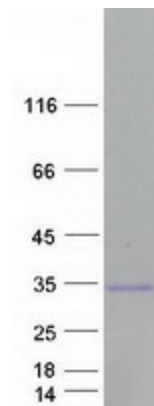
[View online »](#)

Cytogenetics: 1p36.11

Summary: This gene encodes a LIN-28 family RNA-binding protein that acts as a posttranscriptional regulator of genes involved in developmental timing and self-renewal in embryonic stem cells. The encoded protein functions through direct interaction with target mRNAs and by disrupting the maturation of certain miRNAs involved in embryonic development. This protein prevents the terminal processing of the LET7 family of microRNAs which are major regulators of cellular growth and differentiation. Aberrant expression of this gene is associated with cancer progression in multiple tissues. [provided by RefSeq, Sep 2015]

Protein Families: Transcription Factors

Product images:



Coomassie blue staining of purified LIN28A protein (Cat# [TP303397]). The protein was produced from HEK293T cells transfected with LIN28A cDNA clone (Cat# [RC203397]) using MegaTran 2.0 (Cat# [TT210002]).