

Product datasheet for PH303392

CHODL (NM_024944) Human Mass Spec Standard

Product data:

Product Type:	Mass Spec Standards
Description:	CHODL MS Standard C13 and N15-labeled recombinant protein (NP_079220)
Species:	Human
Expression Host:	HEK293
Expression cDNA Clone or AA Sequence:	RC203392
Predicted MW:	30.4 kDa
Protein Sequence:	>RC203392 protein sequence Red=Cloning site Green=Tags(s) MSRVVSLLLGAALLCGHGAFRRVVSQGKVCFADFKHPCYKMAYFHELSSRVSFQEARLACESEGGVLLS LENEAEQKLIESMLQNLTKPGTGISDGFWIGLWRNGDGTSGACPDLYQWSDGNSQYRNWYTDEPSCG SEKCVVMYHQPTANPGLGGPYLYQWDDRCNMKHNYICKYEPEINPTAPVEKPYLTNQPGDTHQNVVTE AGIIPNLIYVVIPTIPLLLLILVAFGTCCFQMLHKSkgRtKtSPNQSTLWISKSTRKESGMEV TRTRPLEQKLISEEDLAANDILDYKDDDDKV
Tag:	C-Myc/DDK
Purity:	> 80% as determined by SDS-PAGE and Coomassie blue staining
Concentration:	>0.05 µg/µL as determined by microplate BCA method
Labeling Method:	Labeled with [U- ¹³ C ₆ , ¹⁵ N ₄]-L-Arginine and [U- ¹³ C ₆ , ¹⁵ N ₂]-L-Lysine
Buffer:	25 mM Tris-HCl, 100 mM glycine, pH 7.3
Storage:	Store at -80°C. Avoid repeated freeze-thaw cycles.
Stability:	Stable for 3 months from receipt of products under proper storage and handling conditions.
RefSeq:	NP_079220
RefSeq Size:	2625
RefSeq ORF:	819
Synonyms:	C21orf68; MT75; PRED12
Locus ID:	140578
UniProt ID:	Q9H9P2



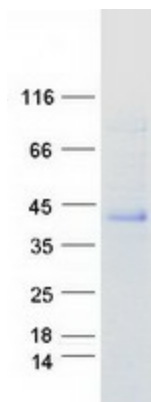
[View online »](#)

Cytogenetics: 21q21.1

Summary: This gene encodes a type I membrane protein with a carbohydrate recognition domain characteristic of C-type lectins in its extracellular portion. In other proteins, this domain is involved in endocytosis of glycoproteins and exogenous sugar-bearing pathogens. This protein localizes predominantly to the perinuclear region. Several transcript variants encoding a few different isoforms have been found for this gene. [provided by RefSeq, Feb 2011]

Protein Families: Transmembrane

Product images:



Coomassie blue staining of purified CHODL protein (Cat# [TP303392]). The protein was produced from HEK293T cells transfected with CHODL cDNA clone (Cat# [RC203392]) using MegaTran 2.0 (Cat# [TT210002]).