

## Product datasheet for PH303378

### BIN3 (NM\_018688) Human Mass Spec Standard

#### Product data:

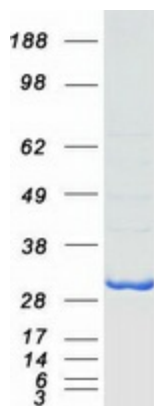
Product Type:	Mass Spec Standards
Description:	BIN3 MS Standard C13 and N15-labeled recombinant protein (NP_061158)
Species:	Human
Expression Host:	HEK293
Expression cDNA Clone or AA Sequence:	RC203378
Predicted MW:	29.7 kDa
Protein Sequence:	>RC203378 protein sequence Red=Cloning site Green=Tags(s)  MSWIPFKIGQPKKQIVPKTVERDFEREYGKLQQLEEQTRRLQKDMKKSTADLAMSKSAVKISLDLLSNP LCEQDQDLLNMVTALDTAMKRMDAFNQEKNQIQKTVIEPLKKGVSFVPSLNMVAVKRREQALQDYRRLQA KVEKYEEKEKTGPVLAKLHQAREELRPVREDFEAKNRQLLEEMPRFYGSRLDYFQPSFESLIRAQVYYYS EMHKIFGDLSHQLDQPGHSDEQREERENEAKLSELRALSI VADD  TRTRPLEQKLI SEEDLAANDILDYKDDDDKV
Tag:	C-Myc/DDK
Purity:	> 80% as determined by SDS-PAGE and Coomassie blue staining
Concentration:	>0.05 µg/µL as determined by microplate BCA method
Labeling Method:	Labeled with [U- <sup>13</sup> C <sub>6</sub> , <sup>15</sup> N <sub>4</sub> ]-L-Arginine and [U- <sup>13</sup> C <sub>6</sub> , <sup>15</sup> N <sub>2</sub> ]-L-Lysine
Buffer:	25 mM Tris-HCl, 100 mM glycine, pH 7.3
Storage:	Store at -80°C. Avoid repeated freeze-thaw cycles.
Stability:	Stable for 3 months from receipt of products under proper storage and handling conditions.
RefSeq:	<u>NP_061158</u>
RefSeq Size:	1863
RefSeq ORF:	759
Locus ID:	55909
UniProt ID:	<u>Q9NQY0</u>
Cytogenetics:	8p21.3



[View online »](#)

**Summary:**

The product of this gene is a member of the BAR domain protein family. The encoded protein is comprised solely of a BAR domain which is predicted to form coiled-coil structures and proposed to mediate dimerization, sense and induce membrane curvature, and bind small GTPases. BAR domain proteins have been implicated in endocytosis, intracellular transport, and a diverse set of other processes. [provided by RefSeq, Jul 2008]

**Product images:**

Coomassie blue staining of purified BIN3 protein (Cat# [TP303378]). The protein was produced from HEK293T cells transfected with BIN3 cDNA clone (Cat# [RC203378]) using MegaTran 2.0 (Cat# [TT210002]).